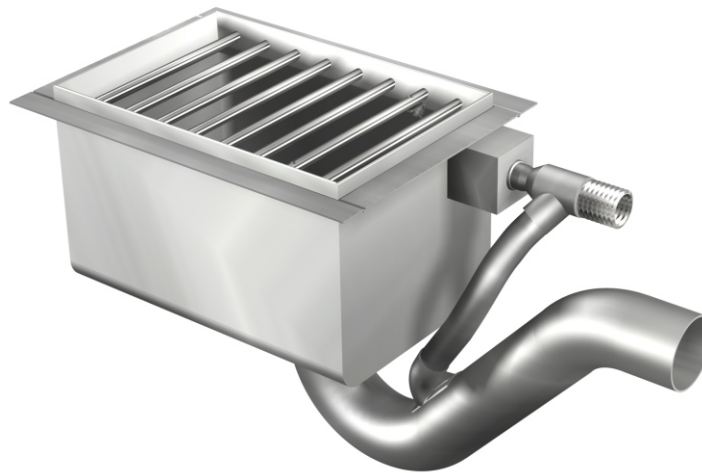




Penal-Ware® 1699 Series

Detox Toilet - Blowout Jet Type - Remote Flushing



1699-W

Fixture May Show Some Available Options

Please visit www.acorneng.com for most current specifications.

Detox Toilet - Blowout Jet Type - Remote Flushing

Recommended for installation in detoxification cells (drunk tanks), padded safety cells, isolation cells and similar locations where conventional toilet may present a hazard to the inmate. Location for toilet should be out of the traffic pattern and as close to the remote located flush valve as practical. Flush valve and a Hot and Cold Hose Box should be mounted in the wall outside the cell. It is recommended that the flush valve be mounted in a flush valve access panel, Acorn model 2898 or flush valve recessed wall box, Acorn model 2803-1 (refer to Dura-Ware Accessories Section for details). Floor should be sloped to drain into the toilet with waste line cleanout provided in the pipe chase.

The exclusive Detox grate design is vandal-resistant and has no sharp edges. Toilet features:

- (1) Welded bars. Removable bar directly over waste outlet is secured with tamper-resistant screws.
- (2) An integral sloping rim which permits solids to be washed into the receptor.
- (3) A receptor with coved corners. Water covers the entire receptor bottom area.
- (4) A continuous flushing rim that washes all four walls with a jet action flush which completely evacuates all solids.

Fixture is fabricated from 14 gage, type 304 stainless steel. Receptor bars are 3/8" diameter. Interior has a matte finish. Toilet has 1" NPT male flushing connection and requires a minimum of 35 PSI flow pressure. Trap will pass a 2-1/8" ball and has a 3-1/2" seal. Toilet waste outlet is 2-3/8" O.D. plain end.

GUIDE SPECIFICATION

Provide and install Acorn Penal-Ware Detox Toilet (specify model number). Fixture shall be fabricated from 14 gage, type 304 stainless steel and shall have a continuous 360 degree washdown flushing rim. Bar grate shall be 3/8" diameter bars welded in place, except bar over waste outlet, which shall be removable and secured in place with two tamper-resistant screws. Receptor shall have coved corners and the bottom area shall maintain a minimum water surface of 8" x 12" x 2" deep. Toilet waste outlet shall be 2-3/8" OD plain end and trap shall pass a 2-1/8" ball.



Penal-Ware® 1699: Blowout Jet Type - Remote Flushing

WALL THICKNESS AND TYPE (Must Specify)
 Thickness _____ Type: Concrete Block Steel

PRODUCT OPTIONS
 -DLF Detox Less Flange
 -TF Transformer, 120VAC to 24VAC (-MVCFV option)
 -VAC AcornVac Systems

MODEL NUMBER AND OPTIONS SELECTION

BASE MODEL NUMBER
 1699 Detox Toilet with Flange

SUPPLY (Must Specify)
 -W Wall (Concealed)

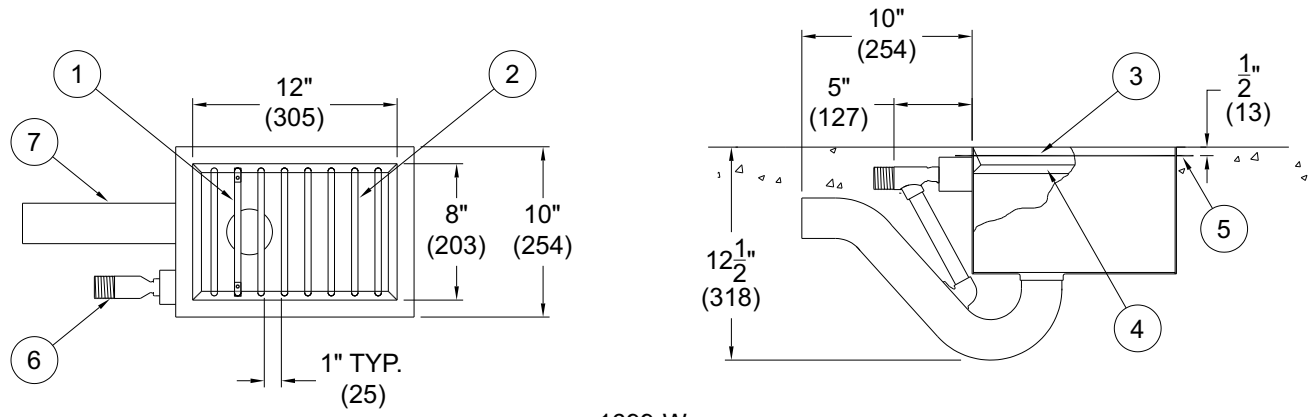
FLUSH VALVE GPFs (Must Specify)
 -1.6 GPF (Not Available in California)
 -3.5 GPF (Not Available in California)

FLUSH VALVE OPTIONS (Must Specify)
REFER TO ACORN DURA-WARE ACCESSORIES FOR FLUSH VALVE COVER #2802, BOX #2803-1 AND PANEL #2898

- EVSFV Master-Trol® Electronic Flush Valve
- EVSPFV Master-Trol® Electronic Flush Valve w/ Piezo Button
- FV Flush Valve, Mechanical
- FVBO Flush Valve by Others
- FVH Flush Valve, Hydraulic
- FVL Flush Valve, Lever Handle (Wall Supply)
- MTPFV Master-Trol® PLUS Electronic Flush Valve
- MTPPFV Master-Trol® PLUS Electronic Flush Valve w/ Piezo Button
- MVCFV Time-Trol® Electronic Flush Valve

Please visit www.acorneng.com for most current specifications.

NOTE: FLUSH VALVE MUST BE NO MORE THAN 144" FROM THE FIXTURE INLET



1699-W

NOTES:

- 1. REMOVABLE BAR.
- 2. INTEGRALLY WELDED BARS.
- 3. SANITARY SLOPING RIM.
- 4. CONTINUOUS FLUSHING RIM.
- 5. FINISHING FLANGE.
- 6. FLUSHING INLET CONNECTION.
- 7. TOILET WASTE CONNECTION.

WARNING: Cancer and Reproductive Harm - www.P65Warnings.ca.gov

<p>Important: Installation instructions and current rough-in are furnished with each fixture. Do not rough in without certified dimensions. Dimensions are subject to manufacturer's tolerance of plus or minus 1/4" and change without notice. Acorn assumes no responsibility for use of void or superseded data. © Copyright 2008 Acorn Engineering Company</p>	
<p style="text-align: center;">Selection Summary</p> <p>Model No. & Option _____</p> <p>Quantity _____</p>	<p style="text-align: center;">Approved for Manufacturing</p> <p>Company _____ Title _____</p> <p>Signature _____ Date _____</p>