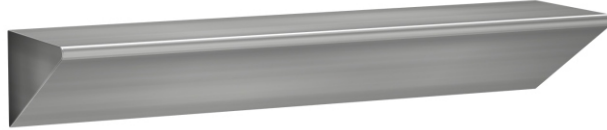




1821 Series

Surface Mounted Shelf



1821

Fixture May Show Some Available Options

Please visit www.acorneng.com for most current specifications.

Surface Mounted Shelf

The Acorn Surface Mounted Shelf is arranged to be installed on finished wall from an accessible pipe chase. Optional Wall Sleeve is recommended for all installations for required wall openings. Shelf is fabricated from type 304 stainless steel, seamless welded construction. All exposed welds are ground smooth and exposed surfaces have a satin finish. Each shelf has three 1/2" anchor tappings which are internally welded to the shelf and its internal reinforcing. This construction makes the shelf virtually indestructible.

Model 1821 Shelf is furnished without integral toothbrush holders.

Model 1822 Shelf has an extended shelf top that provides room for four integral toothbrush holders, two on each side.

Models for walls up to 1/2" thick are furnished with 1/2" zinc plated hex bolts and heavy washers. Models for thicker walls are furnished with 1/2" full thread studs, washers and nuts. Both provide permanent anchoring.



Penal-Ware®: 1821 Surface Mounted Shelf

WALL THICKNESS AND TYPE (Must Specify)

Thickness _____ Type: ___ Concrete ___ Block ___ Steel

Product Options

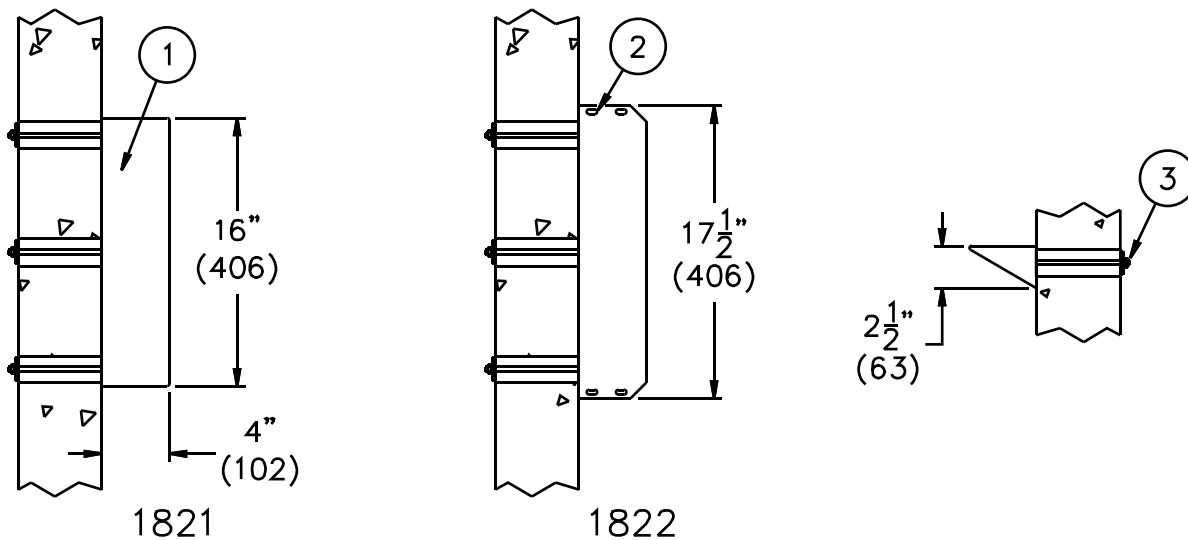
-SW - Wall Sleeve

MODEL NUMBER AND OPTIONS SELECTION

BASE MODEL NUMBER

- 1821 Surface Mounted Shelf
- 1822 Surface Mounted Shelf
w/ Integral Toothbrush Holders

Please visit www.acorneng.com for most current specifications.



NOTES:

1. Surface Mounted Shelf.
2. Integral Toothbrush Holders.
3. Wall Mounting Hardware.

Important: Installation instructions and current rough-in are furnished with each fixture. Do not rough in without certified dimensions. Dimensions are subject to manufacturer's tolerance of plus or minus 1/4" and change without notice. Acorn assumes no responsibility for use of void or superseded data. © Copyright 2003 Acorn Engineering Company	
<p style="text-align: center;">Selection Summary</p> Model No. & Option _____ Quantity _____	<p style="text-align: center;">Approved for Manufacturing</p> Company _____ Title _____ Signature _____ Date _____