

REFERENCE DRAWINGS	
-SW Wall Sleeve	9925-292-001
Mounting Hardware	9957-900-001

INSTALLATION INSTRUCTIONS:

- A-HAND TIGHTEN MOUNTING STUDS ① INTO MOUNTING NUTS ② ON BACK OF FIXTURE.
- B- POSITION FIXTURE ③ ON CELL SIDE, SLIDING STUDS ① THROUGH SLEEVE OR WALL OPENINGS.
- C- PLACE WASHERS ④ OVER STUDS ①. THREAD NUTS ⑤ TO STUDS ①, & TIGHTEN. DO NOT ALLOW STUDS ① TO TURN AND THREAD FURTHER INTO MOUNTING NUTS ②. NOTE: DO NOT EXCEED 6.5 FT/LBS MAXIMUM TORQUE ON 1/4" NUTS ⑤.

ACORN ENGINEERING COMPANY
P.O. BOX 3527 INDUSTRY, CA. 91744
(626) 336-4561 FAX (626) 961-2200

TITLE **REAR MOUNTED ACCESSORIES, CAT #1821, #1822, #1823, #1825, #1827, #1829**

MANUFACTURE DATE
DECEMBER 1971
TO PRESENT

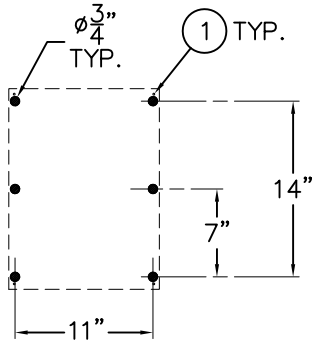
DATE ISSUED
4/16/97
DATE REVISED

DRAWING NUMBER
9925-135-001

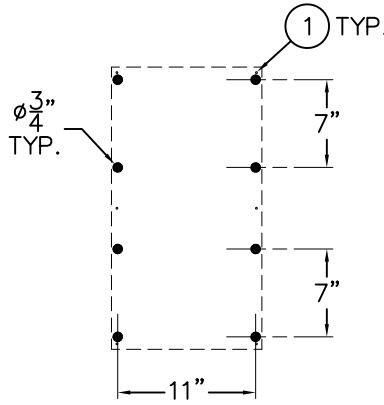


BOTH VIEWS ARE FROM CELL SIDE

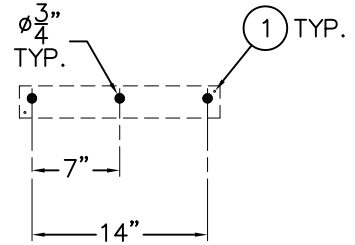
SHADED AREAS ARE REQUIRED WALL OPENINGS



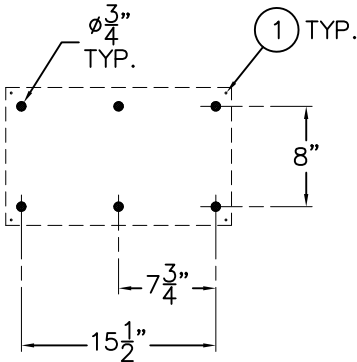
CAT. #1810



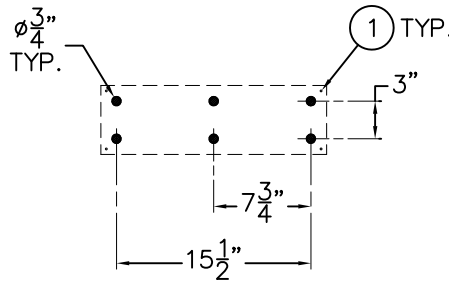
CAT. #1812



CAT. #1821 & 1822



CAT. #1823



CAT. #1825 & 1827

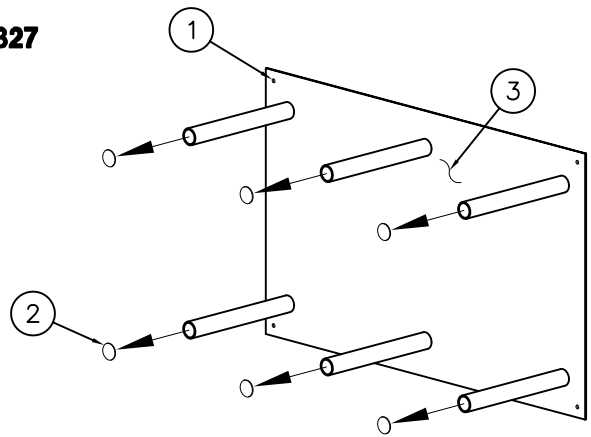
INSTALLATION INSTRUCTIONS:

SLEEVES ARE INSTALLED IN FORMS USING NAIL HOLES (1) PROVIDED OR GROUTED INTO BLOCK WALLS BECOMING A PERMANENT PART OF THE WALL.

NOTE: FOR POURED WALL CONSTRUCTION, TEMPORARY BRACING SHOULD BE INSTALLED WITHIN OPENING TO PREVENT DEFORMATION TO SLEEVE WHICH MAY OCCUR DURING POUR. DO NOT POUR CONCRETE DIRECTLY ON TOP OF WALL SLEEVE. THE OPENINGS ARE CAPPED; THESE CAPS (2) MUST BE REMOVED FROM THE CHASE SIDE OF THE WALL SLEEVE BEFORE INSTALLING FIXTURE.

A- INSTALL SLEEVE AT DESIRED CELL SIDE HEIGHT WITH FLANGE (3) ON CHASE SIDE OF WALL.

B- WHEN SLEEVES ARE NOT AVAILABLE BLOCKOUT WITH DIMENSIONS SHOWN.



*#1823 SHOWN FOR REFERENCE
SCALED x 2*

ACORN ENGINEERING COMPANY P.O. BOX 3527 Industry, CA 91744 15125 Proctor Ave Industry, CA 91746 (626) 336-4561 FAX (626) 961-2200	TITLE WALL SLEEVES (CAT. #1810, 1812, 1821, 1822, 1823 & 1825)		
	MANUFACTURE DATE DECEMBER 1971 TO PRESENT	DATE ISSUED 03/01/90	DRAWING NUMBER 9925-292-001
	DATE REVISED 10/30/12		