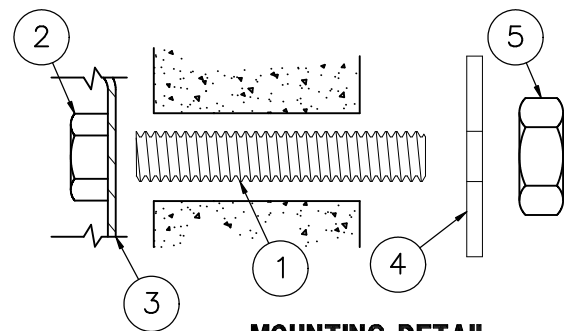


**MOUNTING DETAIL  
FOR 1/4" STUDS**



**MOUNTING DETAIL  
FOR 1/2" STUDS**

**REFERENCE DRAWINGS**

-SW Wall Sleeve	9925-292-001
Mounting Hardware	9957-900-001

**INSTALLATION INSTRUCTIONS:**

- HAND TIGHTEN MOUNTING STUDS ① INTO MOUNTING NUTS ② ON BACK OF FIXTURE.
- POSITION FIXTURE ③ ON CELL SIDE, SLIDING STUDS ① THROUGH SLEEVE OR WALL OPENINGS.
- PLACE WASHERS ④ OVER STUDS ①. THREAD NUTS ⑤ TO STUDS ①, & TIGHTEN. DO NOT ALLOW STUDS ① TO TURN AND THREAD FURTHER INTO MOUNTING NUTS ②. NOTE: DO NOT EXCEED 6.5 FT/LBS MAXIMUM TORQUE ON 1/4" NUTS ⑤.



ACORN ENGINEERING COMPANY  
P.O. BOX 3527 Industry, CA 91744  
15125 Proctor Ave Industry, CA 91746  
(626) 336-4561 FAX (626) 961-2200

TITLE

**REAR MOUNTED ACCESSORIES, CAT #1821, #1822, #1823, #1825, #1827, #1829**

MANUFACTURE DATE

**DECEMBER 1971  
TO PRESENT**

DATE ISSUED

**4/16/97**

DATE REVISED

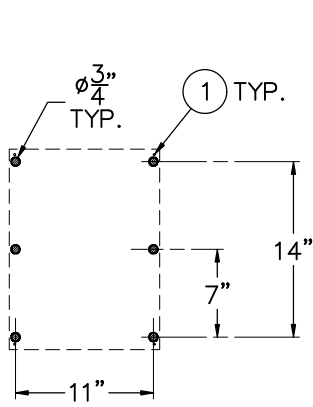
**05/03/21**

DRAWING NUMBER

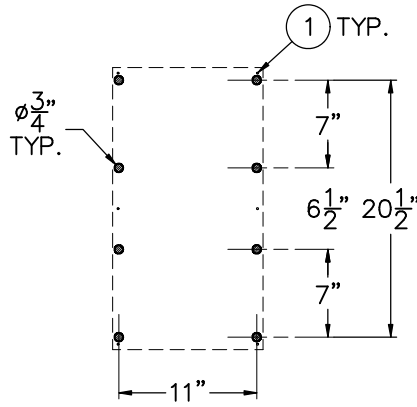
**9925-135-001**



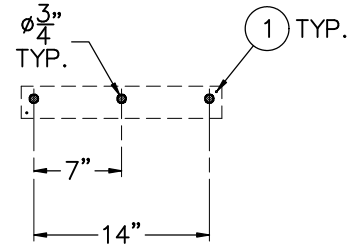
**BOTH VIEWS ARE FROM CELL SIDE**  
 SHADED AREAS ARE REQUIRED WALL OPENINGS



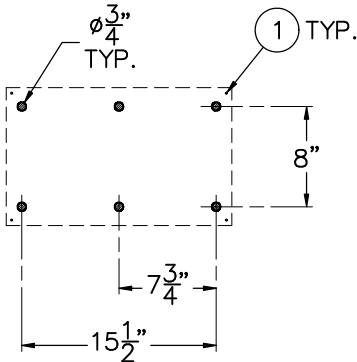
**CAT. #1810**



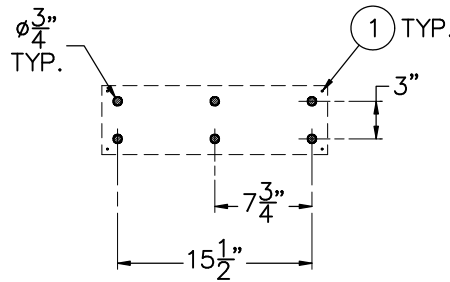
**CAT. #1812/LR1812-SLPT**



**CAT. #1821 & 1822**



**CAT. #1823**



**CAT. #1825 & 1827**

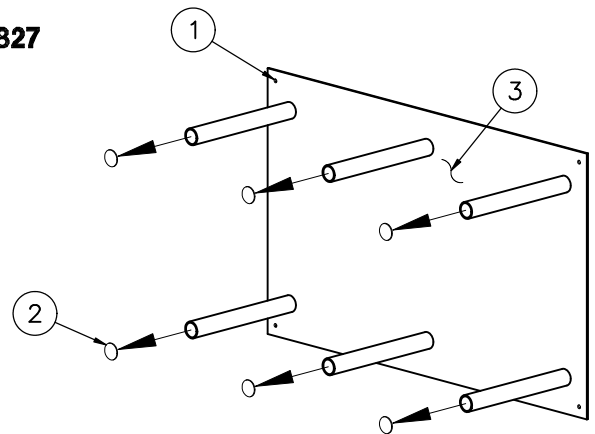
## INSTALLATION INSTRUCTIONS:

SLEEVES ARE INSTALLED IN FORMS USING NAIL HOLES  
 ① PROVIDED OR GROUTED INTO BLOCK WALLS BECOMING  
 A PERMANENT PART OF THE WALL.

NOTE: FOR POURED WALL CONSTRUCTION, TEMPORARY  
 BRACING SHOULD BE INSTALLED WITHIN OPENING TO  
 PREVENT DEFORMATION TO SLEEVE WHICH MAY OCCUR  
 DURING POUR. DO NOT POUR CONCRETE DIRECTLY ON TOP  
 OF WALL SLEEVE. THE OPENINGS ARE CAPPED; THESE CAPS  
 ② MUST BE REMOVED FROM THE CHASE SIDE OF THE WALL  
 SLEEVE BEFORE INSTALLING FIXTURE.

A- INSTALL SLEEVE AT DESIRED CELL SIDE HEIGHT WITH  
 FLANGE ③ ON CHASE SIDE OF WALL.

B- WHEN SLEEVES ARE NOT AVAILABLE BLOCKOUT WITH  
 DIMENSIONS SHOWN.



*#1823 SHOWN FOR REFERENCE  
 SCALED x 2*



ACORN ENGINEERING COMPANY  
 P.O. BOX 3527 Industry, CA 91744  
 15125 Proctor Ave Industry, CA 91746  
 (626) 336-4561 FAX (626) 961-2200

TITLE

**WALL SLEEVES - CAT. #1810, 1812, 1821, 1822, 1823, 1825, LR1812-SLPT**

MANUFACTURE DATE

**DECEMBER 1971  
 TO PRESENT**

DATE ISSUED

**03/01/90**

DATE REVISED

**10/22/24**

DRAWING NUMBER

**9925-292-001**