



## Dura-Ware® 1951 Series 18" Rectangular Lavatory



1951-1-DMS-04

1951-1-CSG-GT-TPT

Fixture May Show Some Available Options

Please visit [www.acorneng.com](http://www.acorneng.com) for most current specifications.

### 18" Rectangular Lavatory

Fixture is arranged to be installed on finished wall from the front side. Units are intended for commercial applications and provide moderate vandal resistance due to open bottom. For Enclosed Bottom when subject to high vandalism, refer to Model 1652FALRB. Fixture is fabricated from 16 gage, type 304 stainless steel and is seamless welded construction. Exterior has a #4 satin finish. Units may be punched for Faucet provided by others (Must specify punching required).

**Lavatory Rectangular Bowl** is 14" x 12" x 6" deep. Lavatory deck has an integral self-draining soap dish. Lavatory includes 1-1/2" diameter drain punching to receive optional -GE or -GT grid strainer. Lavatory mounting bracket is furnished.

**Available Lavatory Valves:** Valve and faucet/spout all conform with lead free requirements for NSF61, Section 9, 1997 and CHSC 116875.

1. Air-Control pneumatically operated, pushbutton valve using atmospheric air. Pushbutton is vandal-resistant and requires less than 5 pounds to activate valve. Valve is direct acting, non-metering type and is optionally available as metering with non-hold open feature. Metering valve timing is adjustable from 5 to 60 seconds. Valve can be remotely located up to 10 feet from the operating pushbutton. Air-Control valve options require an accessible pipe chase for installation and service.
2. Centerset with gooseneck spout and wrist blade handles, Suffix -CSG.
3. Centerset with spout, Suffix -CSS.

**Regularly furnished** is a lavatory mounting bracket. Mounting screws and anchor shields are furnished by others.

### GUIDE SPECIFICATION

Provide and install Acorn Dura-Ware 18" wide Rectangular Lavatory (specify model number and options). Fixture shall be fabricated from 16 gage, type 304 stainless steel. Construction shall be seamless welded. Exterior shall have a #4 satin finish. Lavatory deck shall have an integral air-circulating, self-draining soap dish. Installation shall be made in accordance with manufacturers recommendations and details. Manufacturer shall furnish a wall mounting bracket. Installer shall supply mounting screws and anchor shields.



# Dura-Ware® 1951: 18" Rectangular Lavatory

## WALL THICKNESS AND TYPE (Must Specify)

Thickness \_\_\_\_\_ Type:  Concrete  Block  Steel

## MODEL NUMBER AND OPTIONS SELECTION:

### BASE MODEL NUMBER

1951 18" x 18" Rectangular Lavatory

### FIXTURE MOUNTING AND WASTE (Must Specify)

-1 Off-Floor, Wall Outlet

### CONTROL TYPE (One Selection Below Required)

-9 Less Valve/Faucet by Others (Must Specify Deck Punching)

### CENTERSET FAUCET

(Includes -H34 Deck Punching provided as standard)

-CSG Faucet, Gooseneck Spout, Wrist Blade Handles  
 -CSS Centerset Faucet with Spout

### VALVE SELECTION

- 03 Air-Control, Single Temp, Non-Metering
- 03-M Air-Control, Single Temp, Metering
- 04 Air-Control, H & C, Non-Metering
- 04-M Air-Control, H & C, Metering
- MH Metering, Hot Side Only (-04 Valve Only)
- MVC1 Time-Trol - Single Temp
- MVC2 Time-Trol - Hot & Cold
- PPZ1 Programmable Piezo Button - Single Temp
- PPZ2 Programmable Piezo Button - Hot & Cold

### SPOUT (Required with Valve Selection Above)

-DMS Deck Mounted Spout

## DECK PUNCHING - Required for -9 Valve Control

(1-5/16" diameter holes provided standard)

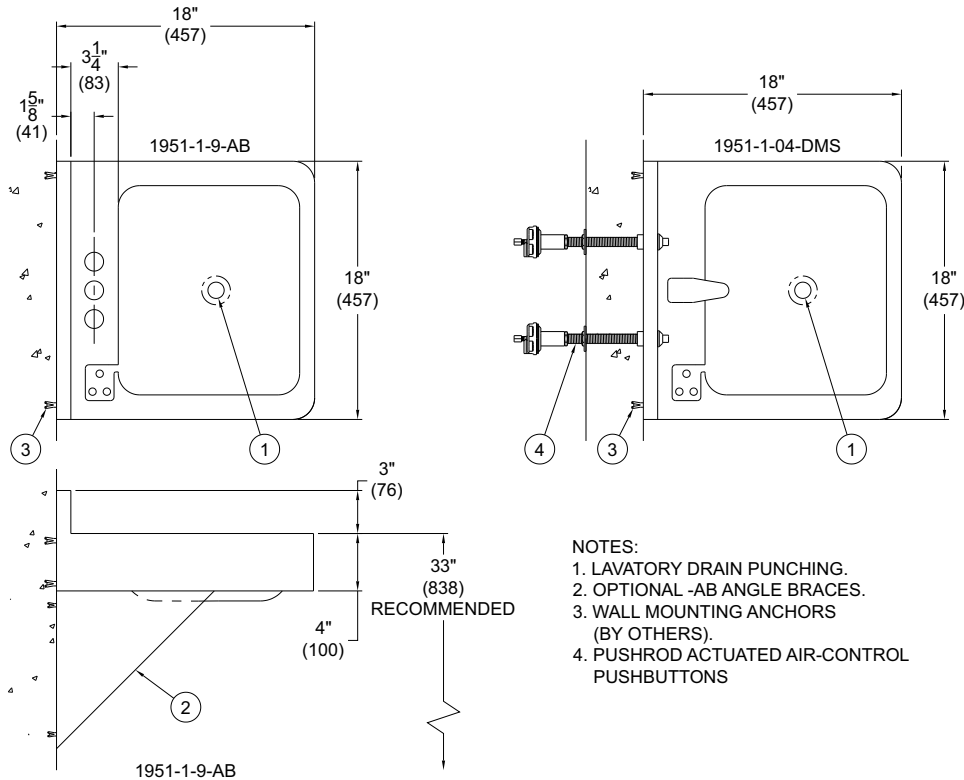
- H1 Single Hole, on Center
- H24 4" Centerset; Two Holes
- H34 4" Centerset; Three Holes
- H28 8" Centerset; Two Holes\*
- H38 8" Centerset; Three Holes\*

\*Eliminates soap dish depression when selected.

## PRODUCT OPTIONS (Must Specify)

- AB Angle Braces
- BRS Brass Body Valve
- EE Elbow Enclosure
- EG Enviro-Glaze Color, Specify: \_\_\_\_\_
- FG 14 Gage Housing
- GE Grid Strainer w/Close Elbow 1-1/4"
- GT Grid Strainer w/Tailpiece 1-1/4"
- IS Integral Shelf
- OF Lavatory Overflow
- TE Trap Enclosure
- TF Transformer, 120VAC to 24VAC (-MVC Only)
- TPT Tubular P-Trap 1-1/4" x 1-1/2"

Please visit [www.acorneng.com](http://www.acorneng.com) for most current specifications.



- NOTES:
1. LAVATORY DRAIN PUNCHING.
  2. OPTIONAL -AB ANGLE BRACES.
  3. WALL MOUNTING ANCHORS (BY OTHERS).
  4. PUSHROD ACTUATED AIR-CONTROL PUSHBUTTONS

**WARNING:** Cancer and Reproductive Harm - [www.P65Warnings.ca.gov](http://www.P65Warnings.ca.gov)

<p><b>Important:</b> Installation instructions and current rough-in are furnished with each fixture. Do not rough in without certified dimensions. Dimensions are subject to manufacturer's tolerance of plus or minus 1/4" and change without notice. Acorn assumes no responsibility for use of void or superseded data. © Copyright 2008 Acorn Engineering Company</p>	
<p style="text-align: center;">Selection Summary</p> <p>Model No. &amp; Option _____</p> <p>Quantity _____</p>	<p style="text-align: center;">Approved for Manufacturing</p> <p>Company _____ Title _____</p> <p>Signature _____ Date _____</p>