



## Dura-Ware® 1951LC Series

20" Rectangular Lavatory



1951LC-1-DMS-04

Fixture May Show Some Available Options

Please visit [www.acorneng.com](http://www.acorneng.com) for most current specifications.

### 20" Rectangular Lavatory

Fixture is arranged to be installed on a finished wall from the front side utilizing a concealed arm carrier by others. Air-Control valve options require an accessible pipe chase for installation and service. Fixture is fabricated of 16 gage, type 304 stainless steel and is seamless welded construction. Exterior has a satin finish.

**Lavatory Rectangular Bowl** is 14" x 12" x 6" deep. Lavatory deck has an integral self-draining soap dish. Lavatory includes 1-1/2" diameter drain punching to receive optional -GE or -GT grid strainer.

**Available Lavatory Valves:** Valve and faucet/spouts all conform with lead free requirements for NSF61, Section 9, 1997 and CHSC 116875.

1. Air-Control pneumatically operated, pushbutton valve using atmospheric air. Pushbutton is vandal-resistant and requires less than 5 pounds to activate valve. Valve is direct acting, non-metering type and is optionally available as metering with non-hold open feature. Metering valve timing is adjustable from 5 to 60 seconds. Valve can be remotely located up to 10 feet from the operating pushbutton
2. Centerset with gooseneck spout and wrist blade handles, Suffix -CSG.
3. Centerset with spout, Suffix -CSS.

### GUIDE SPECIFICATION

Provide and install Acorn Dura-Ware 20" wide Rectangular Lavatory (specify model number and options). Fixture shall be fabricated from 16 gage, type 304 stainless steel. Construction shall be seamless welded. Exterior shall have a satin finish. Lavatory deck shall have an integral air-circulating, self-draining soap dish. Installation shall be made in accordance with manufacturers recommendations and details. Installer shall provide all wall mounting hardware to include concealed arm carrier.

# Dura-Ware® 1951LC : 20" Rectangular Lavatory



## WALL THICKNESS AND TYPE (Must Specify)

Thickness \_\_\_\_\_ Type:  Concrete  Block  Steel

## MODEL NUMBER AND OPTIONS SELECTION:

### BASE MODEL NUMBER

1951LC 20" x 18" Rectangular Lavatory

### FIXTURE MOUNTING AND WASTE (Must Specify)

-1 Off-Floor, Wall Outlet

### SPOUT SELECTION (Must Specify)

- CSG Centerset with Gooseneck Spout and Wrist Blade Handles
- CSS Centerset with Spout
- DMS Deck Mounted Spout

### VALVE SELECTION (Must Specify)

- 03 Air-Control, Single, Non-Metering
- 03-M Air-Control, Single, Non-Metering
- 04 Air-Control, H & C, Non-Metering
- 04-M Air-Control, H & C, Metering
- 9 Without Valves with -H34 Punching (Must Specify Deck Punching)
- MH Metering Hot Side Only
- MVC1 Time-Trol - Single Temp
- MVC2 Time-Trol - Hot & Cold
- PPZ1 Programmable Piezo Button - Single Temp
- PPZ2 Programmable Piezo Button - Hot & Cold

## DECK PUNCHING (Punching Diameter is 1-5/16")

Must specify when indicating -09 Without Valves option; Ø1-5/16" holes provided standard.

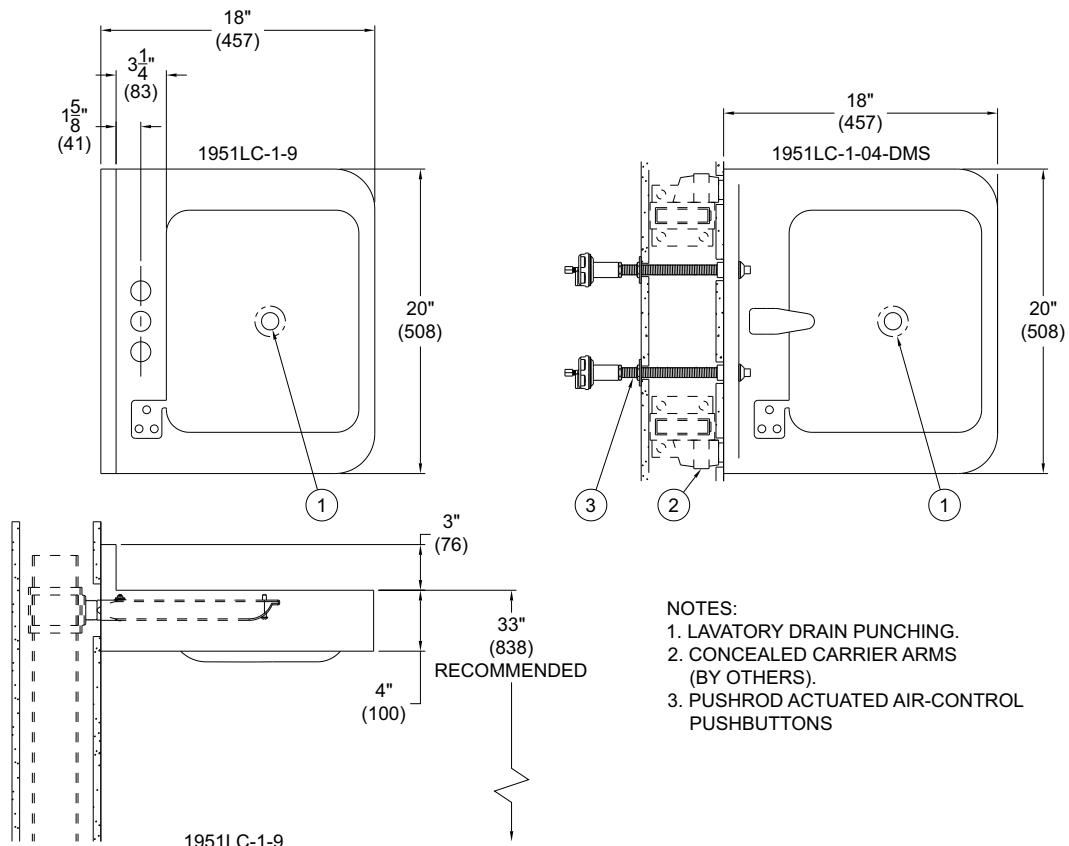
- H1 Single Hole, on Center
- H24 4" Centerset; Two Holes
- H34 4" Centerset; Three Holes
- H28 8" Centerset; Two Holes\*
- H38 8" Centerset; Three Holes\*

\* Eliminates soap dish depression when selected.

## PRODUCT OPTIONS (Must Specify)

- BRS Brass Body Valve
- EE Elbow Enclosure
- EG Enviro-Glaze Color, Specify: \_\_\_\_\_
- FG 14 Gage Housing
- GE Grid Strainer w/Close Elbow 1-1/4"
- GT Grid Strainer w/Tailpiece 1-1/4"
- IS Integral Shelf
- OF Lavatory Overflow
- TE Trap Enclosure
- TF Transformer, 120VAC to 24VAC (-MVC Only)
- TPT Tubular P-Trap 1-1/4" x 1-1/2"

Please visit [www.acorneng.com](http://www.acorneng.com) for most current specifications.



- NOTES:
1. LAVATORY DRAIN PUNCHING.
  2. CONCEALED CARRIER ARMS (BY OTHERS).
  3. PUSHROD ACTUATED AIR-CONTROL PUSHBUTTONS

**WARNING:** Cancer and Reproductive Harm - [www.P65Warnings.ca.gov](http://www.P65Warnings.ca.gov)

<p><b>Important:</b> Installation instructions and current rough-in are furnished with each fixture. Do not rough in without certified dimensions. Dimensions are subject to manufacturer's tolerance of plus or minus 1/4" and change without notice. Acorn assumes no responsibility for use of void or superseded data. © Copyright 2009 Acorn Engineering Company</p>	
<p style="text-align: center;">Selection Summary</p> <p>Model No. &amp; Option _____</p> <p>Quantity _____</p>	<p style="text-align: center;">Approved for Manufacturing</p> <p>Company _____ Title _____</p> <p>Signature _____ Date _____</p>