



Dura-Ware® 2160 Series Blowout Jet Urinal



2160-T-1-FV

2160-W-1-FV-2898

Fixture May Show Some Available Options

Please visit www.acorneng.com for most current specifications.

Blowout Jet Urinal

Fixture is arranged to be installed on finished wall and serviced from the front side. Fixture is fabricated from 14 gage, type 304 stainless steel and is seamless welded construction. Exterior has a satin finish. Interior has a matte finish. Fixture has a back wall washdown, and is optionally available with a continuous flushing rim that washes all four walls. Corners are covered to facilitate cleaning. P-trap is fully enclosed. Back of fixture is sound-deadened with fire-resistant material.

Urinal is blowout jet type with back wall washdown. Flushing inlet connection is 1-1/2" NPT male and requires a minimum of 25 PSI flow pressure and a water consumption of 3.5 gallons per flush. P-trap has a minimum 2-1/2" seal.

Exposed Mounting Screws are furnished. No concealed wall fasteners or anchor shields are furnished.

GUIDE SPECIFICATION

Provide and install Acorn Dura-Ware Blowout Jet Urinal (specify model number and options). Urinal shall be back washdown type. Fixture shall be fabricated from 14 gage, type 304 stainless steel and shall have covered corners to facilitate cleaning. All welds shall be continuous and exterior surfaces shall have a satin finish. P-trap shall be fully enclosed. Fixture shall be furnished with exposed mounting screws.



Dura-Ware® 2160: Blowout Jet Urinal

WALL THICKNESS AND TYPE (Must Specify)

Thickness: _____ Type: Concrete Block Steel

MODEL NUMBER AND OPTIONS SELECTION

BASE MODEL NUMBER

2160 Blowout Jet Urinal

SUPPLY (Must Specify)

-T Top (Exposed)
 -W Wall (Concealed)

FIXTURE MOUNTING AND WASTE

-1 Off-Floor, Wall Outlet

FLUSH VALVE OPTIONS (Must Specify)

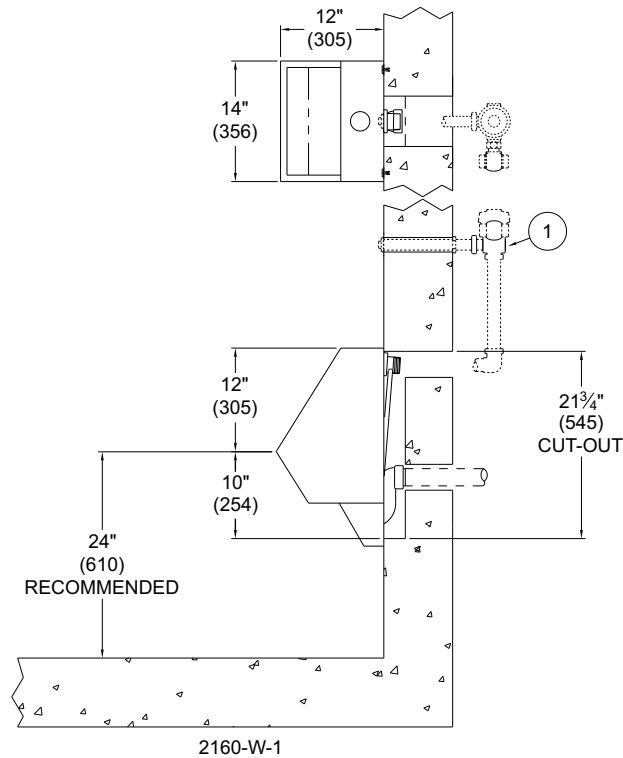
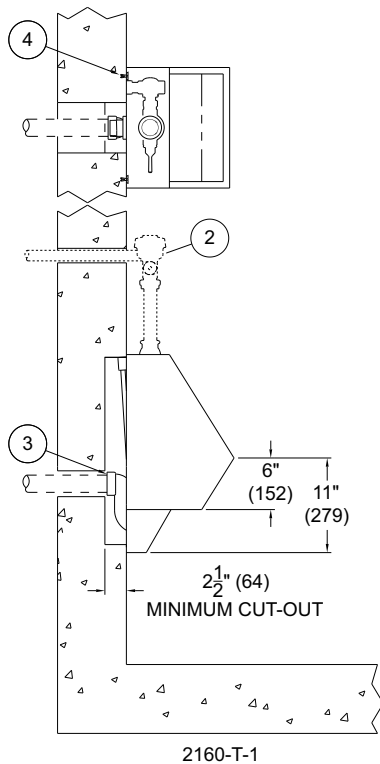
Refer to Acorn Dura-Ware Supplementary for Box Cover(s) and Access Panel(s)

- FV Flush Valve, Mechanical 3.5 GPF
- FVBO Flush Valve by Others
- FVH Flush Valve, Hydraulic (N/A for Top Supply)
- FVL Flush Valve, ADA Lever Handle (Concealed F.V.)
- MVCFV Time-Trol Flush Valve (N/A for Top Supply)

PRODUCT OPTIONS (Must Specify)

- CFR Continuous Flushing Rim
- EG Enviro-Glaze Color, Specify: _____
- FVT Flush Valve Thru Wall Connection
- TF Transformer, 120VAC to 24VAC (-MVCFV Option)
- WA1 Waste Adapter to 2" NCT Female
- WA2 Waste Adapter to 2" NPT Male
- WA3 Waste Adapter to 2" NPT Female
- WA4 Waste Adapter to 2" No-Hub

Please visit www.acorneng.com for most current specifications.



NOTES:

1. Optional -FV Flush Valve - Wall Supply.
2. Optional -FV Flush Valve - Top Supply.
3. Urinal Waste Outlet.
4. Wall Mounting Anchors (By Others).

WARNING: Cancer and Reproductive Harm - www.P65Warnings.ca.gov

<p>Important: Installation instructions and current rough-in are furnished with each fixture. Do not rough in without certified dimensions. <small>Dimensions are subject to manufacturer's tolerance of plus or minus 1/4" and change without notice. Acorn assumes no responsibility for use of void or superseded data. © Copyright 2008 Acorn Engineering Company</small></p>	
<p style="text-align: center;">Selection Summary</p> <p>Model No. & Option _____</p> <p>Quantity _____</p>	<p style="text-align: center;">Approved for Manufacturing</p> <p>Company _____ Title _____</p> <p>Signature _____ Date _____</p>