



Dura-Ware® 2180 Series

Stall Type Washout Urinal - ADA Compliant



2180-T-3-FV

2180-W-3-FV-2898

Fixture May Show Some Available Options

Please visit www.acorneng.com for most current specifications.

Stall Type Washout Urinal - ADA Compliant

Fixture is arranged to be installed on finished wall and serviced from the front side. Fixture is fabricated from 14 gage, type 304 stainless steel and is seamless welded construction. Exterior has a satin finish. Interior has a matte finish. Urinal has a back wall washdown, and is optionally available with a continuous flushing rim that washes all four walls. Corners are covered to facilitate cleaning. Back and underside of fixture is sound-deadened with fire-resistant material. Unit conforms with ANSI, UFAS and ADA requirements for accessibility. Compliance is subject to the interpretation and requirements of the local code authority.

Urinal is washout type with back wall washdown. Flushing inlet connection is 3/4" NPT male. Bottom of urinal is sloped to a high capacity, stainless steel, beehive dome strainer. Strainer is secured with tamper-resistant screws. Waste outlet is 2" inside caulk.

Verify Flush Valve rating is compatible with local code requirements.

Exposed Mounting Screws are furnished. No concealed wall fasteners or anchor shields are furnished.

GUIDE SPECIFICATION

Provide and install Acorn Dura-Ware Stall Type Washout Urinal (specify model number and options). Fixture shall be fabricated from 14 gage, type 304 stainless steel and shall be back wall washdown type. Inside corners of urinal are covered to facilitate cleaning. Bottom shall slope to a high capacity, stainless steel, beehive dome strainer. Waste outlet shall be 2" inside caulk. Fixture shall be furnished with exposed mounting screws. Units to conform with ANSI, UFAS and ADA requirements for accessibility.

Dura-Ware® 2180: Stall Type Washout Urinal - ADA Compliant



WALL THICKNESS AND TYPE (Must Specify)

Thickness: _____ Type: Concrete Block Steel

MODEL NUMBER AND OPTIONS SELECTION

BASE MODEL NUMBER

2180 Stall Type Washout Urinal

SUPPLY (Must Specify)

-T Top (Exposed)
 -W Wall (Concealed)

FIXTURE MOUNTING AND WASTE

-3 On-Floor, Floor Outlet

FLUSH VALVE GPF's

-1.0 GPF (Not Available in California)
 -1.5 GPF (Not Available in California)

FLUSH VALVE OPTIONS (Must Specify)

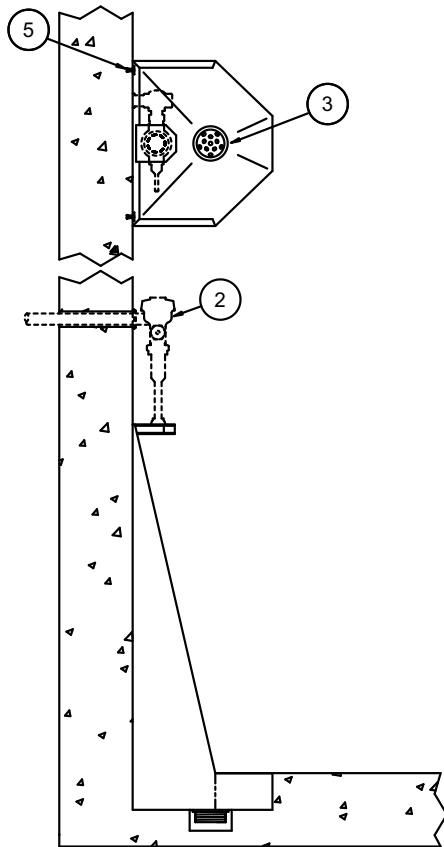
Refer to Acorn Dura-Ware Supplementary for Box Cover(s) and Access Panel(s)

-FV Flush Valve, Mechanical
 -FVBO Flush Valve by Others
 -FVH Flush Valve, Hydraulic (N/A for Top Supply)
 -FVL Flush Valve, ADA Lever Handle (Concealed F.V.)
 -MVCFV Time-Trol Flush Valve (N/A for Top Supply)

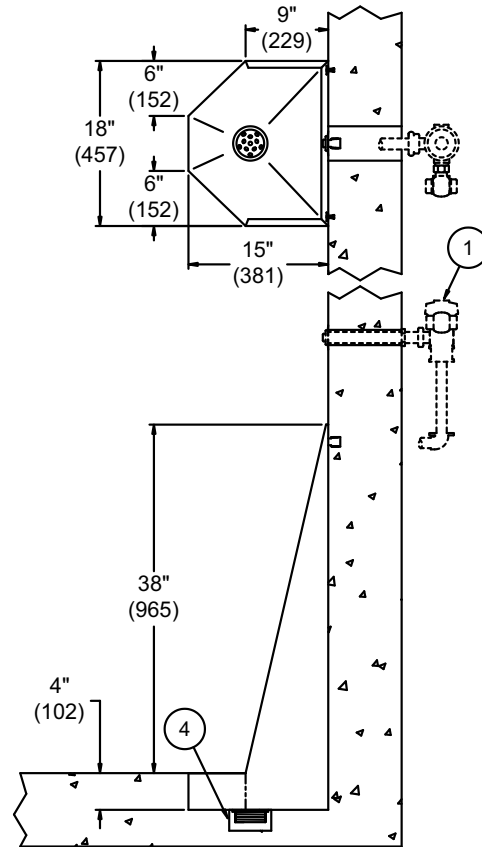
PRODUCT OPTIONS

-CFR Continuous Flushing Rim
 -EG Enviro-Glaze Color, Specify: _____
 -FVT Flush Valve Thru Wall Connection
 -TF Transformer, 120VAC to 24VAC (-MVCFV Option)

Please visit www.acorneng.com for most current specifications.



2180-T-3



2180-W-3

NOTES:

1. Optional -FV Flush Valve, Wall Supply.
2. Optional -FV Flush Valve, Top Supply.
3. Beehive Strainer.

4. Urinal Waste Outlet.
5. Wall Mounting Anchors (By Others).

WARNING: Cancer and Reproductive Harm - www.P65Warnings.ca.gov

| | |
|---|--|
| <p>Important: Installation instructions and current rough-in are furnished with each fixture. Do not rough in without certified dimensions. Dimensions are subject to manufacturer's tolerance of plus or minus 1/4" and change without notice. Acorn assumes no responsibility for use of void or superseded data. © Copyright 2010 Acorn Engineering Company</p> | |
| <p>Selection Summary</p> <p>Model No. & Option _____</p> <p>Quantity _____</p> | <p>Approved for Manufacturing</p> <p>Company _____ Title _____</p> <p>Signature _____ Date _____</p> |