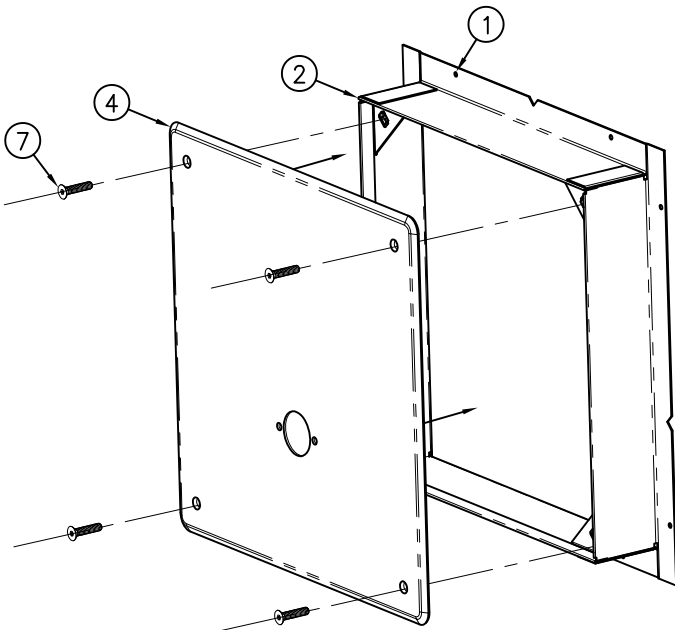
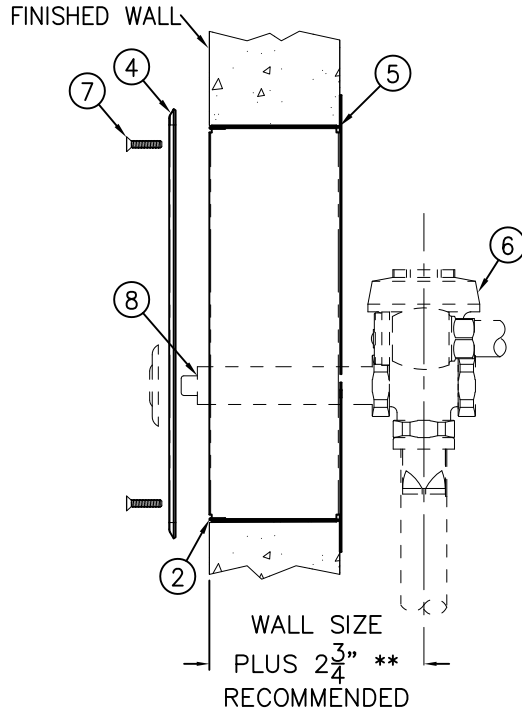


2898 LESS ESCUTCHEON



ROUGH-IN:

SLEEVES ARE INSTALLED IN FORMS (USING NAIL HOLES ① PROVIDED) OR GROUTED INTO BLOCK WALLS, OF BECOMING A PERMANENT PART OF THE WALL. FRONT EDGE FRAME ② SHOULD BE FLUSH WITH FINISHED WALL.

A—MAKE UP FLUSH VALVE SUPPLY CONNECTION FOR VALVE INLET ③. REFER TO FIXTURE INSTALLATION SHEETS FOR SIZE FLUSH VALVE INLET.

INSTALLATION INSTRUCTIONS:

- B—REMOVE STAINLESS STEEL PANEL ④.
- C—INSTALL SLEEVE FRAME WITH ⑤ FLANGE ON PIPE CHASE SIDE OF WALL.
- D—INSTALL FLUSH VALVE ⑥ PER MANUFACTURE'S INSTALLATION SHEETS.
- E—ATTACH ④ PANEL TO ② FRAME WITH (4) 1/4"—20 x 1" ⑦ TAMPER-RESISTANT STAINLESS STEEL SCREWS PROVIDED. REFERENCE DRAWING NO. 9951-005-001
- F—COMPLETE INSTALLATION USING APPROPRIATE ⑧ PUSHBUTTON ASSEMBLY PER MANUFACTURERS INSTALLATION PROCEDURES.

**** NOTE:**

FLUSH VALVE BY OTHERS SHOWN FOR REFERENCE ONLY. COMPLETE WITH INSTALLER PROVIDED FLUSH VALVE AND APPROPRIATE PUSHBUTTON ASSEMBLY AS REQUIRED FOLLOWING RECOMMENDED MANUFACTURERS INSTALLATION PROCEDURES. ALL CONNECTION PIPING OR ADAPTERS ARE BY OTHERS.



ACORN ENGINEERING COMPANY
P.O. BOX 3527 Industry, CA 91744
15125 Proctor Ave Industry, CA 91746
(626) 336-4561 FAX (626) 961-2200

TITLE **FLUSH VALVE ACCESS PANEL MODEL 2898**

MANUFACTURE DATE
JANUARY 1973
TO PRESENT

DATE ISSUED
06/01/90
DATE REVISED
10/29/12

DRAWING NUMBER
9908-399-001