



# Valves: 3340 Penal-Ware Shower Flow Control Replacement

## Watersaver Penal Shower Valve Flow Control Retrofit - Penal-Ware Showers

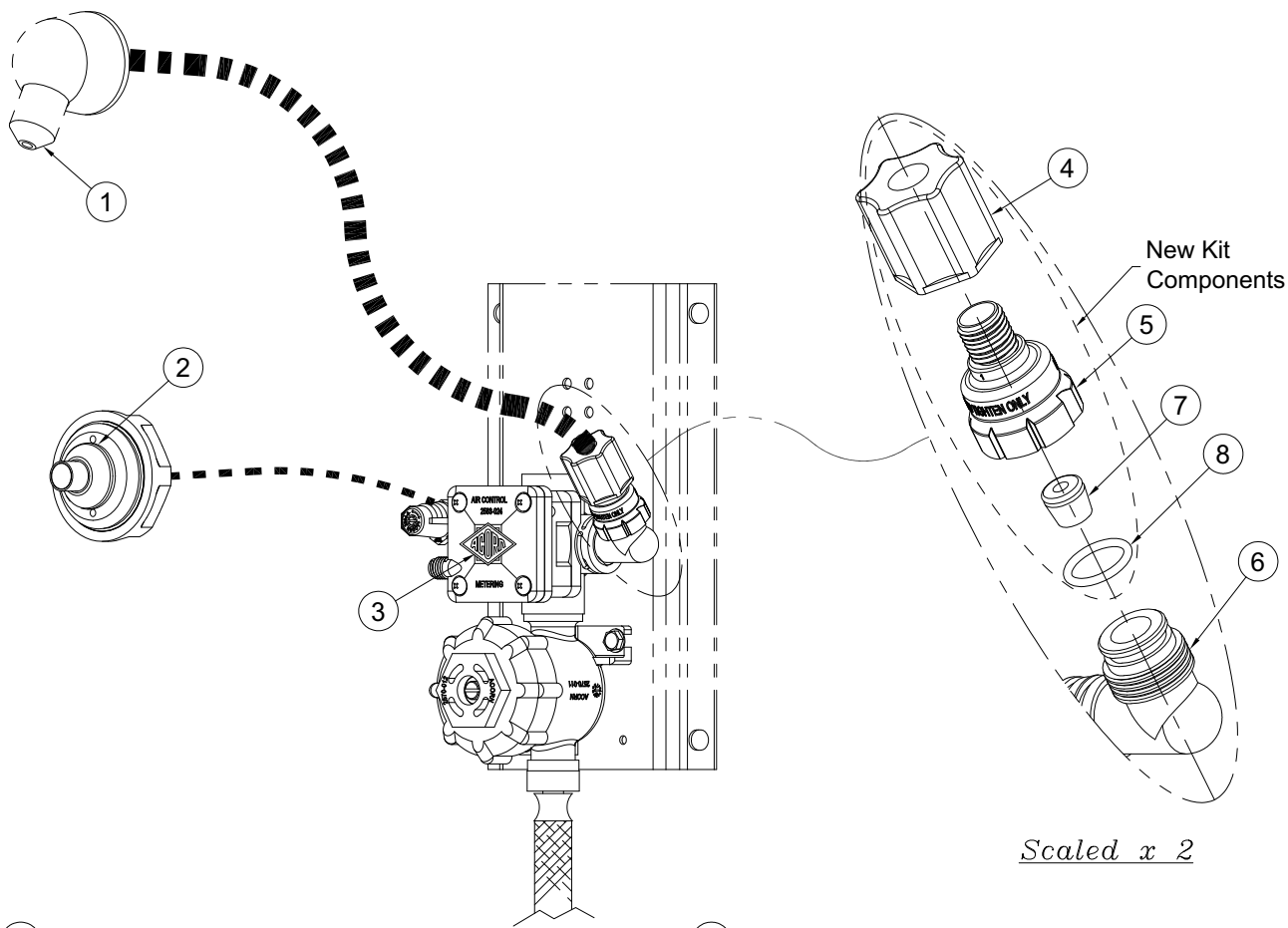
**Penal-Ware Shower Flow Control Retrofit:** Retrofit intended to provide lower flow control replacement to existing Penal-Ware Shower Air-Control Valve with 2.5 GPM. Kit includes a pack of 10, must specify GPM flow control.

Please visit [www.acorneng.com](http://www.acorneng.com) for most current specifications

### PRODUCT OPTIONS (Must Specify)

#### FLOW CONTROL

- 1.4 GPM
- 1.6 GPM
- 2.0 GPM



- ① Existing Penal-Ware Showerhead
- ② Existing Air-Control Pushbutton
- ③ Existing Single Temperature Penal-Ware Shower Air-Control Valve, Shown For Reference
- ④ NEW 3/8" Compression Nut
- ⑤ NEW Flow Control Adapter
- ⑥ Existing Single Temp. Flow Control Elbow
- ⑦ NEW Flow Control (Must Specify GPM)
- ⑧ NEW O-Ring

**⚠ WARNING: Cancer and Reproductive Harm - [www.P65Warnings.ca.gov](http://www.P65Warnings.ca.gov)**

<p><b>Important:</b> Installation instructions and current rough-in are furnished with each fixture. Do not rough in without certified dimensions. Dimensions are subject to manufacturer's tolerance of plus or minus 1/4" and change without notice. Acorn assumes no responsibility for use of void or superseded data. © Copyright 2009 Acorn Engineering Company</p>	
<p>Selection Summary</p> <p>Model No. &amp; Option _____</p> <p>Quantity _____</p>	<p>Approved for Manufacturing</p> <p>Company _____ Title _____</p> <p>Signature _____ Date _____</p>