



Shower-Ware® 450B Series

Apex Type 5 Surface Mounted Showers



CONTROLS
INSIDE

- Patented D697,591
- © Acorn Engineering Co. Fixture May Show Some Available Options

458B-W-RD



CSH-WSA Showerhead is
EPA WaterSense Certified

Please visit www.acorneng.com for most current specifications.

Apex Type 5 Surface Mounted Showers

Housing is 18 gage, type 304 stainless steel with satin finish.

Control Valve type is indicated by selected Apex model number. Valves with removable Cartridges contain all wearing parts and are serviced from the face of the Shower for easy maintenance. Valves are tamper-resistant and may include an easy to close mechanism and low leverage Handle to protect the operating parts from excessive torque. Valves have flexible Hose supply connectors.

Showerhead is solid brass, triple chrome-plated and include built-in 1.6 GPM flow restrictor. The Acorn Logan Wizard Showerhead design provides self-cleaning with every use and has an adjustable spray pattern from a coarse stream to a fine mist.

Fasteners. Acorn furnishes all exposed tamper-resistant fasteners necessary to complete the on-site Shower assembly; however, concealed wall fasteners or Anchor Shields are not furnished.

GUIDE SPECIFICATION

Provide and install Acorn Apex Surface Mounted Showers (specify model number and options). Housing shall be 18 gage, type 304 stainless steel with satin finish. Valve shall have flexible Hose supply connectors. Showerhead shall be Acorn Logan Wizard with adjustable spray from a coarse stream to a fine mist. Installation shall be made in accordance with manufacturer's recommendations and details.

Shower-Ware®: 450B Apex Type 5 Surface Mounted Showers



Showerhead Discharge Height (Not Part of Model Number)

6'-0" 5'-6" 5'-0" Other (Specify) _____

MODEL NUMBER AND OPTIONS SELECTION

SERIES

4 Apex

TYPE

-5 Surface Mounted Shower

VALVE (Must Specify)

- 0 Electronic Valves, Single-Temp Metering (Must Specify Type Where Indicated Below)
- 6 Air-Control, Single Temperature Metering
- 8 T/P Temperature-Pressure Balancing Mixing Valve With Patented Ligature Resistant Tri-Lever Handle (ASSE 1016 Compliant)

SUPPLY (Must Specify)

- T Top
- W Wall

ELECTRONIC VALVE SELECTION

Master-Trol® (Electronic)

- EVS1 Single Temp
- EVSP1 Single Temp, Piezo Button

Master-Trol® PLUS (Electronic)

- MTP1 Single Temp
- MTPP1 Single Temp, Piezo Button

Time-Trol® (Electronic)

- MVC1 Single Temp

Programmable (Electronic) w/9VDC Plug-In Transformer

- PPZ1 Single Temp Programmable Piezo Button

VALVE OPTIONS

- CI Cycle Interrupt for Time-Trol Valves
- LVR Lever Handle (-8 Valve)
- MV Metering Valve in Riser (Air-Control)
- PBH Hemispherical Pushbutton (-6 Valve or -MV)
- TF Transformer, 120VAC to 24VAC (-MVC option only)

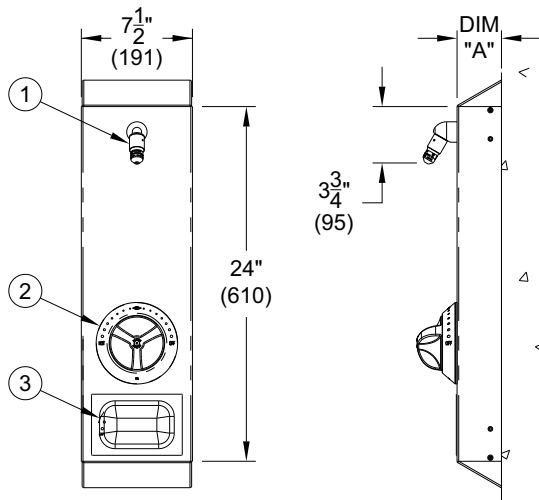
SHOWERHEAD OPTIONS

- CSH Conical Showerhead (Ligature Resistant)
- CSH-WSA WaterSense 1.5 GPM Conical Showerhead (Ligature Resistant)
- F Flow Control
 - 2.0 GPM (Not Available For Use in California)
- FX Handheld Shower With 60" Stainless Steel Hose (In Lieu of Conventional Showerhead)
 - QD Quick-Disconnect
 - PSO -QD w/ Positive Shut-Off
- MSH Multi-Stream Showerhead
- P Penal Showerhead
- Y Universal Ball Joint
- YY Lockable Universal Ball Joint

PRODUCT OPTIONS

- BS Built-in Liquid Soap System
- D Surface Mounted Soap Dish
- EG Enviro-Glaze Color, Specify _____
- FG 14 Gauge Material Construction
- GR24 24" Glide Rail (For -FX Handheld Shower. Shipped Loose for Wall Mounting)
- RD Recessed Soap Dish
- SC Supply Cover, Ceiling Height _____

Please visit www.acorneng.com for most current specifications.



MODEL# 458B-W-RD

VALVE TYPE	DIM "A"
-0, Electronic, S/T	4 1/2" (114)
-8, T/P Mixing Valve	3" (76)
-6, Air-Control, S/T	4" (102)

NOTES:

1. Showerhead
2. T/P Valve w/ Standard Patented Tri-Lever Handle
3. Optional -RD Recessed Soap Dish Shown

WARNING: Cancer and Reproductive Harm - www.P65Warnings.ca.gov

<p>Important: Installation instructions and current rough-in are furnished with each fixture. Do not rough in without certified dimensions. Dimensions are subject to manufacturer's tolerance of plus or minus 1/4" and change without notice. Acorn assumes no responsibility for use of void or superseded data. © Copyright 2007 Acorn Engineering Company</p>	
<p style="text-align: center;">Selection Summary</p> <p>Model No. & Option _____</p> <p>Quantity _____</p>	<p style="text-align: center;">Approved for Manufacturing</p> <p>Company _____ Title _____</p> <p>Signature _____ Date _____</p>