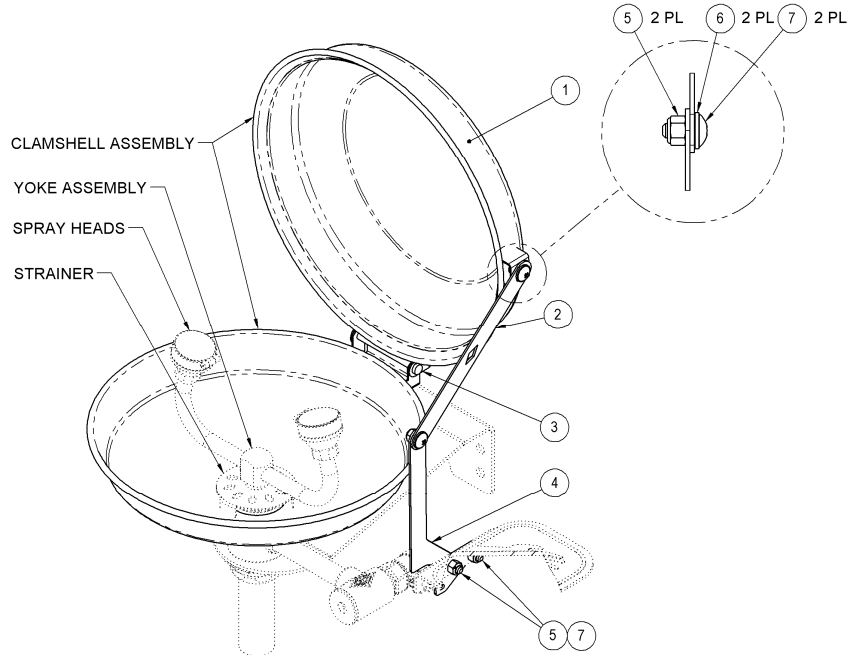


CLAMSHELL RETROFIT KIT (S0000-CS1)

ASSEMBLY INSTRUCTIONS:

1. Turn off water supply before performing maintenance on unit.
2. Remove current yoke assembly (with spray heads). Remove strainer and existing bowl.
3. Replace existing bowl with clamshell assembly and re-install the strainer and yoke assembly in reverse order using appropriate thread sealants on threaded supply line joints.
4. Attach clamshell linkage as shown in the detail on this page using supplied hardware.
5. **All parts must be properly aligned and tightened for proper functionality. Test clamshell assembly by ensuring that lid will remain open in the on position and fully close in the off position.**
6. Turn water on and test unit to ensure that eye/facewash unit functions as designed with the clamshell parts installed.



PARTS LIST

| ITEM # | PART NUMBER | DESCRIPTION |
|--------|--------------|--------------------------------------|
| 1 | 7101-320-005 | UPPER CLAMSHELL SUBASSY |
| 2 | 7101-308-150 | SIDE LINK 1, CLAMSHELL COVER |
| 3 | 7101-312-001 | STAINLESS STEEL PIVOT PIN ASSEMBLY |
| 4 | 7101-310-150 | SIDE LINK 2, CLAMSHELL COVER |
| 5 | 0302-013-000 | 1/4-20 S/S HEX NUT W/NYLOCK |
| 6 | 7101-316-000 | .25 ID PLASTIC SHOULDER WASHER |
| 7 | 6502-200-000 | 1/4-20 X 5/8 TRUSS HD PHILLIPS SCREW |