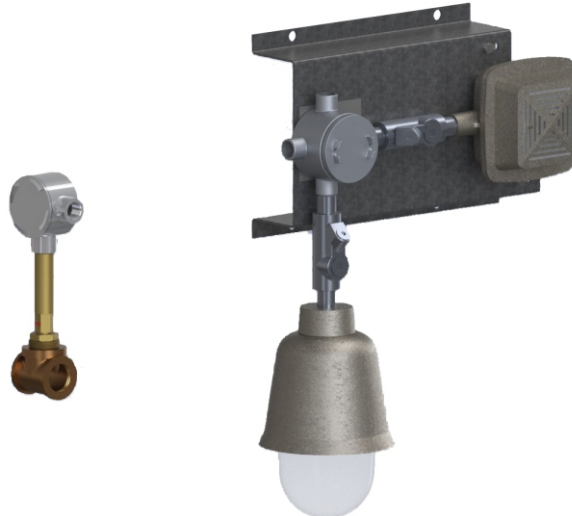




ACORN SAFETY  
P.O. BOX 3527  
CITY OF INDUSTRY, CA 91744-0527  
**UNITED STATES OF AMERICA**  
[WWW.ACORNSAFETY.COM](http://WWW.ACORNSAFETY.COM)

## **INSTALLATION, OPERATION AND MAINTENANCE INSTRUCTIONS**

### **ELECTRIC ALARM WITH LIGHT AND HORN**



**Model: S0000-AL2-C1D1-DB1**

**TECHNICAL ASSISTANCE TOLL FREE TELEPHONE NUMBER**  
**1.800.591.9360**  
**TECHNICAL ASSISTANCE FAX: 1.626.855.4894**

#### **NOTES TO THE INSTALLER:**

- 1. Please leave this documentation with the owner of the fixture when finished.**
- 2. Please read this entire booklet before beginning the installation.**
- 3. Check your installation for compliance with plumbing, electrical, ANSI Z358.1 and other applicable codes.**

#### **LIMITED WARRANTY** **UNITED STATES AND CANADA**

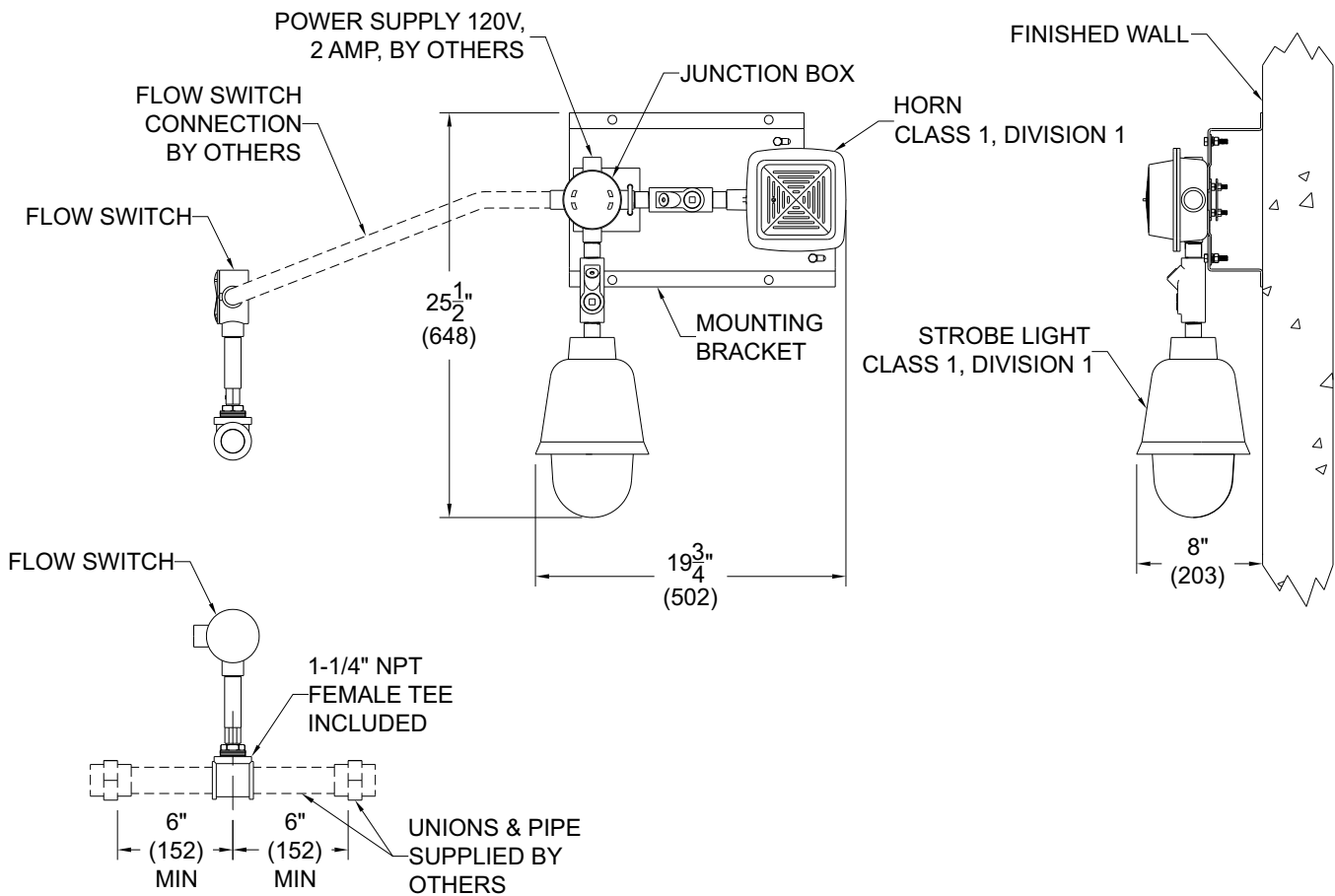
Acorn Safety warrants that its products are free from defects in material or workmanship under normal use and service for a period of one year from date of shipment. Acorn's liability under this warranty shall be discharged solely by replacement or repair of defective material, provided Acorn is notified in writing within one year from date of shipment, F.O.B. Industry, California.

This warranty does not cover installation or labor charges and does not apply to materials, which have been damaged by other causes such as mishandling or improper care or abnormal use. The repair or replacement of the defective materials shall constitute the sole remedy of the Buyer and the sole remedy of Acorn under this warranty. Acorn shall not be liable under any circumstances for incidental, consequential or direct charges caused by defects in materials, or any delay in the repair or replacement thereof. This warranty is in lieu of all other warranties expressed or implied. Product maintenance instructions are issued with each unit and disregard or non-compliance with these instructions will constitute an abnormal use condition and void the warranty. Stainless steel must be protected on job sites during construction and must be properly maintained after the water has been introduced into the safety product or Acorn's warranty is void.

**PRELIMINARY STEPS**

1. Read the installation instructions prior to beginning the installation.
2. Separate parts from packaging and verify all necessary parts are accounted for and undamaged. Obtain missing or damaged parts from Acorn Safety prior to beginning installation.
3. Flush water supply lines prior to installation. This will remove unwanted debris from the lines and prevent unwanted blockages in the safety equipment.
4. In order to comply with ANSI Z358.1, the safety equipment must be inspected periodically. An inspection tag is provided for documentation purposes.
5. All employees at risk of contamination should be informed and trained in the use of this and any other safety equipment. The signage provided should be posted appropriately in close proximity to this equipment.

**ROUGH-IN**



**INSTALLATION INSTRUCTIONS:**

**IMPORTANT: flush water supply lines prior to connection to safety equipment.**

All field wiring must comply to NEC class 1 division 1 standard.

**Notes:**

- Flow Switch must be installed with tee fitting in horizontal position, switch body in vertical position with at least 6" of straight pipe on each side of the Flow switch tee fitting. Direction of flow is marked on switch body.
- Use hand tools and wrenches in a manner which will prevent marring finished surfaces. Strap wrenches or tools with plastic jaw linings are highly recommended.
- Refer to Rough-in for location of electrical rough-in.
- Fragments of Teflon tape or pipe sealant residue can interfere with the proper operation of this unit. Ensure pipe sealant methods do not cause contamination in the system.

**Step one: Flow switch installation**

**NOTE: Do not remove, loosen or rearrange any components or fittings in the alarm assembly.**

1. Determine location of flow switch in water supply line. Flow switch must be installed with tee fitting in horizontal position, switch body in vertical position with at least 6" of straight pipe on each side of the Flow switch tee fitting. See rough-in drawing.
2. Mount the flow switch in the water supply line. The water flow must be in the direction of the arrow that is marked on the flow switch body.

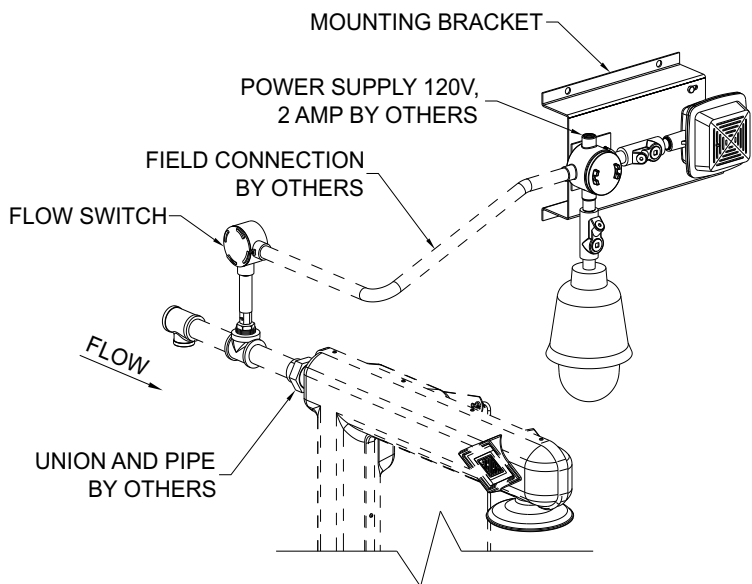
**Step two: Alarm/Light installation**

**NOTE: Refer to NEC, state and other local codes for proper installation of this product.**

1. Determine location for mounting alarm and light assembly. Light should be positioned a minimum of 7 feet above the finished floor for best visibility.
2. Do not remove, loosen or rearrange any components or fittings in the alarm assembly. Position alarm assembly as required, using the mounting bracket as a template and mark the hole locations on the wall. Make sure that mounting location is capable of safely bearing alarm assembly weight. Use appropriate anchors and bolts to securely fasten alarm assembly to wall.
3. Connect flow switch to alarm assembly, see wiring diagram page 4. All field wiring must comply to NEC class 1, division 1, standard.
4. Connect power to the alarm assembly, see wiring diagram page 4. All field wiring must comply to NEC class 1, division 1, standard.

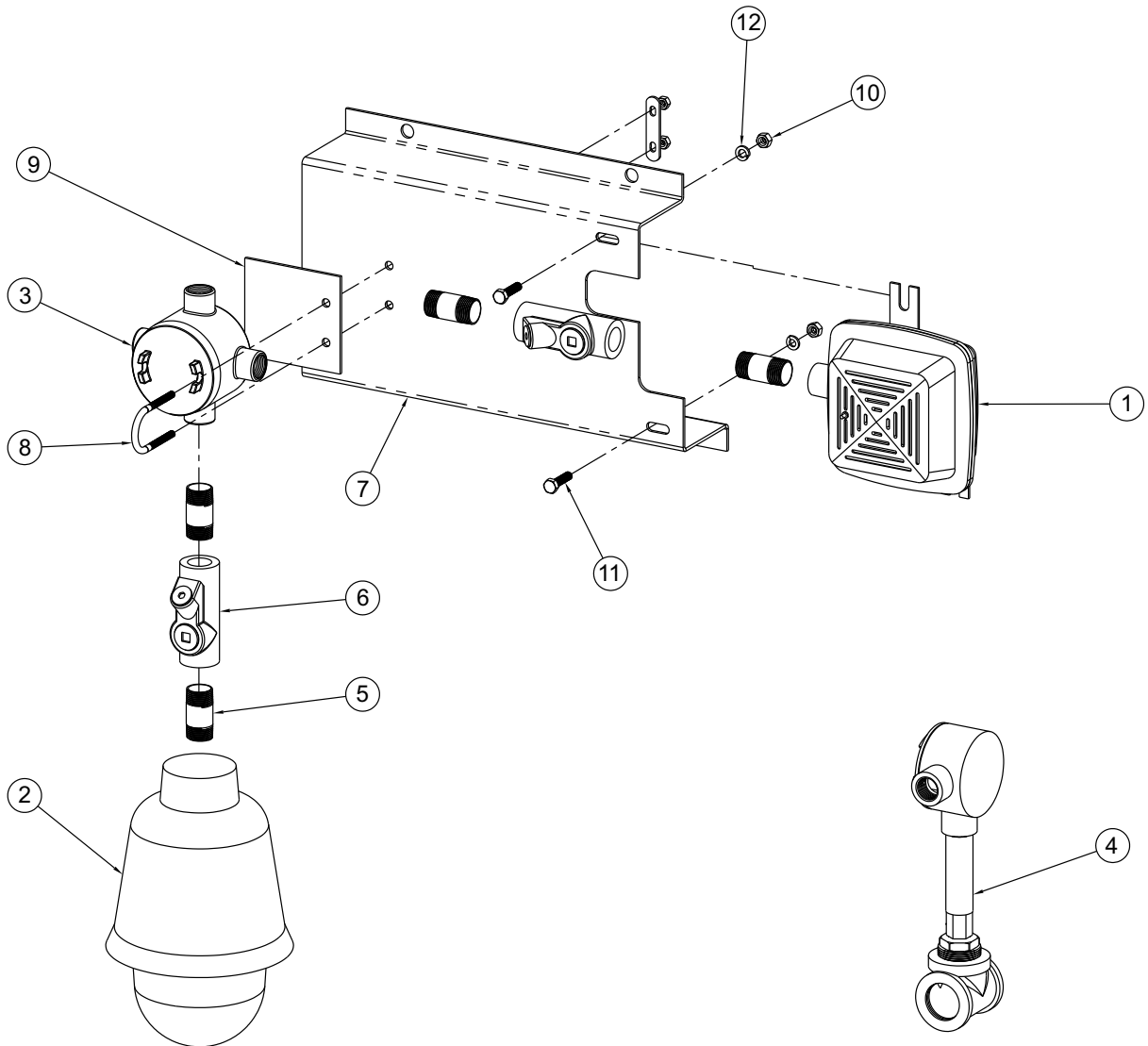
**Step three: Test**

1. Apply power to alarm assembly. Alarm and light should not be activating if safety equipment is not activated.
2. Supply water to fixture and flush air from system.
3. Activate (start water flow) safety equipment; alarm and light should now be activating.
4. De-activate (stop water flow) safety equipment; alarm and light should now automatically de-activate.



**PARTS LIST**

ITEM #	PART NUMBER	DESCRIPTION
1	7103-241-000	HAZARDOUS LOCATION HORN, CLASS 1 DIVISION 1
2	7103-240-000	STROBE LIGHT, EXPLOSION PROOF, CLASS 1 DIVISION 1
3	7106-201-000	JUNCTION BOX CLASS 1 DIVISION 1
4	7103-104-000	FLOW SWITCH, 1-1/4" NPT DPDT
5	7103-243-000	RIGID CONDUIT NIPPLE 3/4" NPT X 2" LG, C1, D1
6	7103-242-000	3/4" SEALING FITTING, C1, D1
7	7103-240-199	BRACKET, HORN WALL MOUNTING
8	0352-006-000	U-BOLT WITH PLATE & NUTS
9	7103-241-199	SPACER, HORN WALL MOUNTING
10	0302-006-000	5/16-18 UNC STAINLESS STEEL HEX NUT
11	0207-010-000	STAINLESS STEEL HEX HD CAP SCR 5/16-18x1.25
12	6502-563-000	5/16-18 HELICAL SPRING LOCK WASHER, SS



**FLOW SWITCH/ALARM WIRING DIAGRAM**

