



ACORN SAFETY
P.O. BOX 3527
CITY OF INDUSTRY, CA 91744-0527
UNITED STATES OF AMERICA
WWW.ACORNSAFETY.COM

INSTALLATION, OPERATION AND MAINTENANCE INSTRUCTIONS

EYEWASH / FACEWASH



Models S0430-AS / S0440-AS

TECHNICAL ASSISTANCE TOLL FREE TELEPHONE NUMBER

1.800.591.9360

TECHNICAL ASSISTANCE FAX: 1.626.855.4894

NOTES TO INSTALLER:

- 1. Please leave this documentation with the owner of the fixture when finished**
- 2. Please read this entire booklet before beginning the installation**
- 3. Check your installation for compliance with plumbing, electrical, ANSI Z358.1, and other applicable codes.**

LIMITED WARRANTY
UNITED STATES & CANADA

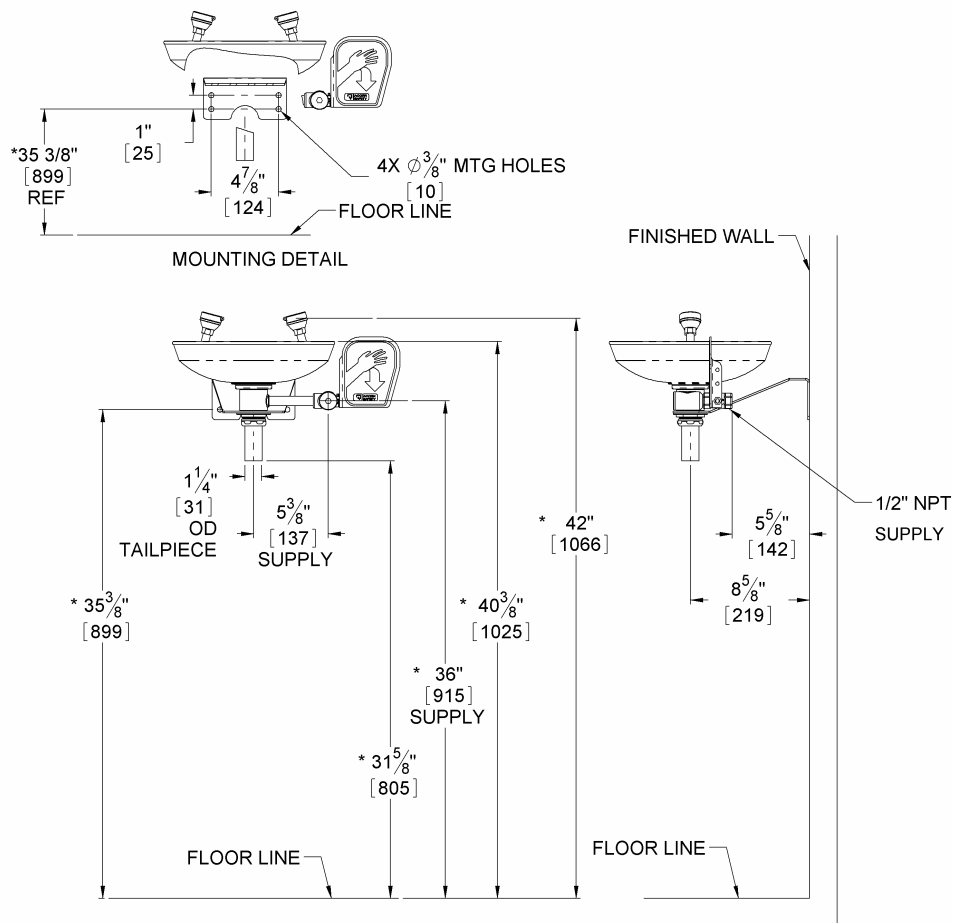
Acorn Safety warrants that its products are free from defects in material or workmanship under normal use and service for a period of one year from date of shipment. Acorn's liability under this warranty shall be discharged solely by replacement or repair of defective material, provided Acorn is notified in writing within one year from date of shipment, F.O.B. Industry, California.

This warranty does not cover installation or labor charges and does not apply to materials, which have been damaged by other causes such as mishandling or improper care or abnormal use. The repair or replacement of the defective materials shall constitute the sole remedy of the Buyer and the sole remedy of Acorn under this warranty. Acorn shall not be liable under any circumstances for incidental, consequential or direct charges caused by defects in the materials, or any delay in the repair or replacement thereof. This warranty is in lieu of all other warranties expressed or implied. Product maintenance instructions are issued with each unit and disregard or non-compliance with these instructions will constitute an abnormal use condition and void the warranty. Stainless steel must be protected on jobsites during construction and must be properly maintained after the water has been introduced into the safety product or Acorn's warranty is void.

PRELIMINARY STEPS

1. **Read the installation instructions prior to beginning the installation**
2. **Separate parts from packaging and verify all necessary parts are accounted for and undamaged. Obtain missing or damaged parts from Acorn Safety prior to beginning installation.**
3. **Flush water supply lines prior to installation. This will remove unwanted debris from the lines and prevent unwanted blockages in the safety equipment.**
4. **In order to comply with ANSI Z358.1, the safety equipment must be inspected periodically. An inspection tag has been provided for documentation purposes.**
5. **All employees at risk of contamination should be informed and trained in the use of this and any other safety equipment. The signage provided should be posted appropriately in close proximity to this equipment.**

ROUGH-IN



GENERAL NOTES:
 1. ALL DIMENSIONS ARE IN INCHES [MM].
 *2. DIMENSIONS SHOWN ARE FOR NOMINAL ADULT HEIGHT. ANSI Z358.1 REQUIRES NOZZLES TO BE BETWEEN 33" [838] AND 45" [1143] ABOVE THE FLOOR.

INSTALLATION INSTRUCTIONS:

Supplies required: (not provided by Acorn)

1. Wall fastener anchors, washers and bolts for eyewash assembly.
(Machine threads or lag bolts based on construction.)
2. Wall fasteners.
3. Pipe sealant or Teflon tape for sealing water connections.
4. 1 1/4" slip joint p-trap / drain connection.

IMPORTANT: flush water supply lines prior to connection to safety equipment.

Notes:

- Top of spray nozzles must be between 33"- 45" from finished floor in order to meet ANSI Z358.1
- Use hand tools and wrenches in a manner which will prevent marring finished surfaces. Strap wrenches or tools with plastic jaw linings are highly recommended.
- Refer to Rough-in for location of supply and drain lines.
- Fragments of Teflon tape or pipe sealant residue can interfere with the proper operation of this unit. Ensure pipe sealant methods do not cause contamination in the system.

Step one: Mounting

1. Position assembly on wall at appropriate height and in proximity to the supply and drain lines.
2. While holding the assembly level against the wall, mark position of mounting bolt holes.
3. Remove assembly and install appropriate anchors into wall to receive 3/8" diameter bolts (supplied by others).
4. Re-position assembly against wall and install 3/8" bolts to secure the assembly to the wall.

Step two: drain line

1. Install sanitary drain line (supplied by others), if not already done, in a position which will align with eyewash assembly as shown in rough in.
2. Install 1 1/4" O.D. Tailpiece to assembly.
3. Connect Assembly drain tailpiece with a 1 1/4" slip joint p-trap or elbow connection. (Supplied by others) to the sanitary drain previously mentioned.

Step three: Supply line

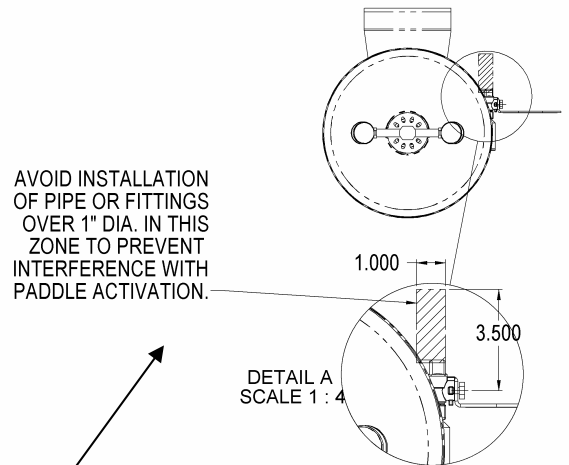
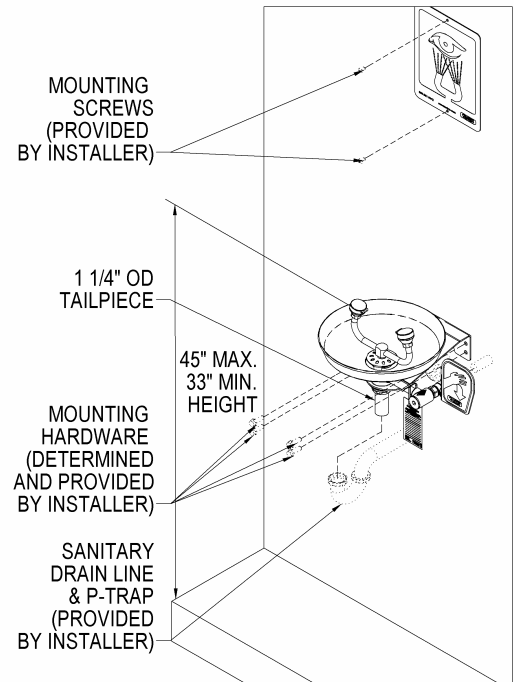
1. Install water line (Supplied by others), in a position, to align with 1/2" ball valve as shown in Rough-in.
2. Make connection to 1/2" NPTF ball valve with appropriate fittings (Supplied by others)

Note: Large fittings need to be avoided in the area as shown in the figure to the right, to avoid interference with valve paddle activation.

3. Open water supply.
4. Test for leaks, proper operation and flow.

Step four: Signage & Inspection

1. Position sign with clear visibility, in close proximity to safety equipment and mark mounting hole locations.
2. Select appropriate 1/4" anchors, screws and washers (Supplied by others) to install signage.
3. Attach inspection tag supplied, with plastic zip tie.



PARTS LIST

ITEM #	PART NUMBER	DESCRIPTION
1	7101-100-001	EYEWASH NOZZLE
	7101-104-001	FACEWASH NOZZLE
	7101-112-001	S/S EYEWASH NOZZLE
	7101-057-001	EYEWASH NOZZLE W/ S/S LID
	7101-058-001	FACEWASH NOZZLE W S/S LID
2	7101-404-001	S/S YOKE STEM ASSEMBLY
3	7100-108-000	BOWL STRAINER
4	7100-008-000	S/S BOWL
5	7101-048-000	S/S BOWL GASKET
6	7101-073-001	S/S BASIN FLANGE
7	7101-045-000	S/S SUPPLY TUBE
8	7101-012-199	S/S WALL MOUNTING BRACKET
9	7100-401-000	INSPECTION TAG
10	7100-144-199	S/S JAM NUT
11	7100-113-001	1 1/4ODx2.75 CHROME TAILPIECE ASSY
12	7101-075-001	S/S WATER SUPPLY STRAINER
13	7101-210-001	S/S BALL VALVE PADDLE ASSY
14	7100-227-000	S/S WASHER

