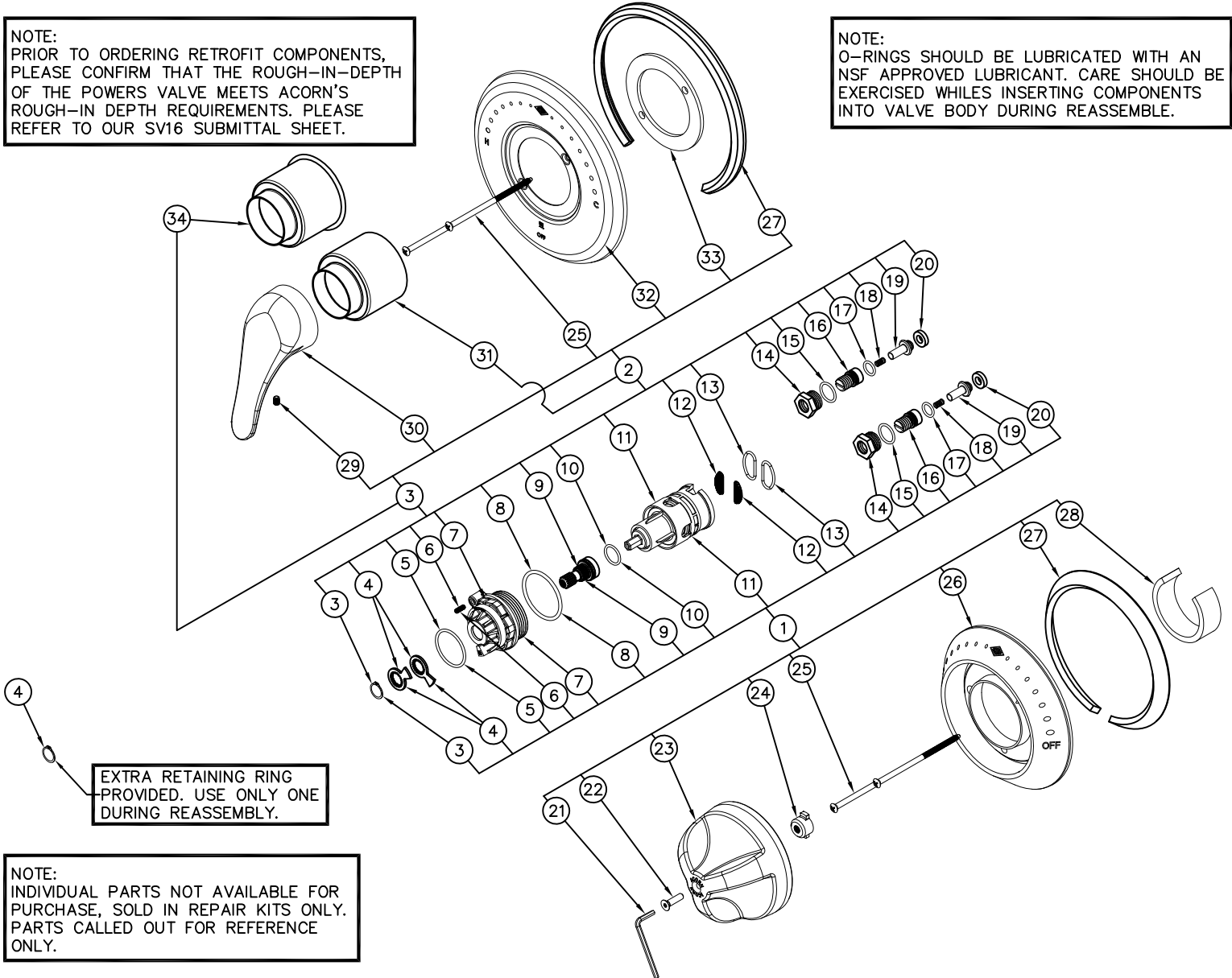




NOTE:
PRIOR TO ORDERING RETROFIT COMPONENTS,
PLEASE CONFIRM THAT THE ROUGH-IN-DEPTH
OF THE POWERS VALVE MEETS ACORN'S
ROUGH-IN DEPTH REQUIREMENTS. PLEASE
REFER TO OUR SV16 SUBMITTAL SHEET.

NOTE:
O-RINGS SHOULD BE LUBRICATED WITH AN
NSF APPROVED LUBRICANT. CARE SHOULD BE
EXERCISED WHILE INSERTING COMPONENTS
INTO VALVE BODY DURING REASSEMBLY.



EXTRA RETAINING RING
PROVIDED. USE ONLY ONE
DURING REASSEMBLY.

NOTE:
INDIVIDUAL PARTS NOT AVAILABLE FOR
PURCHASE, SOLD IN REPAIR KITS ONLY.
PARTS CALLED OUT FOR REFERENCE
ONLY.

ITEM	KIT NUMBER	DESCRIPTION	ITEM	KIT NUMBER	DESCRIPTION
1	RSV16	RETRO-FIT KIT w/ TRI-LEVER HANDLE	2	RSV16-LVR	RETRO-FIT KIT w/ LEVER HANDLE
3	RSV16-PANEL	KIT w/ LVR HANDLE FOR PANEL SHWR			

ITEM	DESCRIPTION	ITEM	DESCRIPTION	ITEM	DESCRIPTION
3	RETAINING RING (x2)	14	CHECK CAP (x2)	25	OVAL HEAD SCREWS (x2)
4	TEMPERATURE STOP WASHERS (x2)	15	CHECK CAP O-RING (x2)	26	TRI-LEVER HNDLE ESCUTCHEON
5	EXTERNAL BONNET O-RING	16	CHECK ADJUST SCREW (x2)	27	ESCUTCHEON GASKET
6	SET SCREW	17	CHECK ADJUST SCRW O-RING (x2)	28	VALVE BODY GASKET
7	VALVE BONNET	18	CHECK SPRING (x2)	29	CUP POINT SET SCREW
8	BONNET O-RING	19	CHECK PLUNGER (x2)	30	LEVER HANDLE
9	VALVE STEM	20	CHECK SEAL (x2)	31	VALVE SLEEVE
10	VALVE STEM O-RING	21	5/32" CNTR REJCT ALLEN WRENCH	32	ESCUTCHEON, LEVER HANDLE
11	CARTRIDGE	22	TRI-LEVER HANDLE SCREW	33	TRIM PLATE CENTER GASKET
12	STAINLESS STEEL SCREENS (x2)	23	TRI-LEVER HANDLE	34	VALVE SLEEVE - PANEL SHWRS
13	CARTRIDGE SCREEN O-RINGS (x2)	24	STEM INSERT		

ACORN ENGINEERING COMPANY P.O. BOX 3527 Industry, CA 91744 15125 Proctor Ave Industry, CA 91746 (626) 336-4561 FAX (626) 961-2200	T/P VALVE REPLACE CARTRIDGE & TRIM FOR VALVES PRIOR TO JUNE 2014		
	MANUFACTURE DATE	DATE ISSUED	DRAWING NUMBER
	JUNE 2014 TO PRESENT	06/17/14 09/01/16 B	