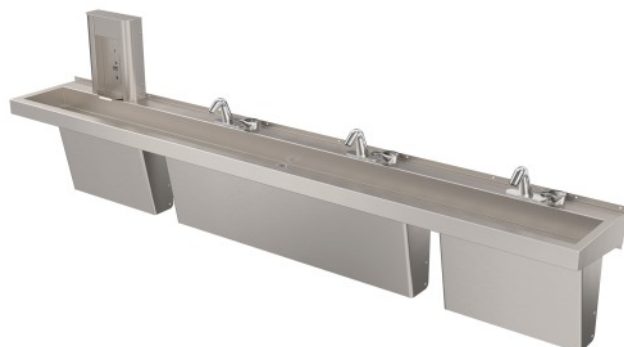




## Wash-Ware® DSW000 Series

Deluxe Stainless Steel Wall Mounted Hand Wash and Bottle Filler Trough



**DSW4120 (Shown with Compact Bottle Fillers and TC12)**



**DSW260 (Shown with Splash Guard and TC2)**

Patent# US D1,016,253 S



Fixture May Show Some Available Accessories



Please visit [www.acorneng.com](http://www.acorneng.com) for most current specifications.

### Deluxe Wall Mounted Hand Wash and Bottle Filler Trough -ADA Compliant

Acorn's Stainless-Steel Deluxe Wall Mounted Hand-Wash Trough is designed to assist with public safety in areas where hand washing facilities and access to drinking water is required. The cost-effective design saves on space and is ideal for use in public buildings of all types to expand the number of existing Hand-Wash and Bottle Filler Stations. Unit conforms with ADA and OBC Guidelines for accessibility. Compliance is subject to the interpretation and requirements of the Local Code Authority.

**Trough** is wall mounted and available in several widths to accommodate one to four persons. Deck is pre-drilled at each station with (3) Ø 1-5/16" hole punching for a 4" Centerset for either a Faucet or Bottle Filler (shipped loose for user placement of components). A pre-drilled Backsplash return is provided for mounting unit to a reinforced wall. Basin is formed to facilitate drainage and is punched to accept a 1-1/2" Drain Assembly. Unit is fabricated from 16 gauge, type 304 stainless steel with exposed surfaces polished to a #4 satin finish.

**Third Party Certification** of the Hand-Wash Trough units exists for compliance with Uniform Plumbing Code (UPC®), National Plumbing Code of Canada (cUPC®) and ASME A112.19.3.

#### Bottle Filler BF1SC

BF1S is a Pushbutton operated Compact Bottle Filler. Housing construction is 18 gauge type 304 Stainless Steel with a #4 satin finish. Bottle Filler provides approximately 1 GPM flow rate and includes Laminar Flow Spout to minimize splashing.

#### Bottle Filler BF2SC

BF2S is a 9 volt Sensor Operated Compact Bottle Filler. Housing construction is 18 gauge type 304 Stainless Steel with a #4 satin finish. Bottle Filler provides approximately 1 GPM flow rate and includes Laminar Flow Spout to minimize splashing. Optional -BCD (Bottle Counter Display) indicates the quantity of 16 oz disposable Plastic Bottles saved from a landfill and also displays the Water Filter status.

**Faucet** selections are optionally available and include: Single Temp Battery Powered Sensor Operated Faucet with Stainless Steel "J" Spout and Deck Plate for 4" Centerset punching; Hot and Cold Gooseneck Spout with Wrist Blade Handles; Hot and Cold Sink Spout with Wrist Blade Handles; Single Temp Pushbutton Metering Spout and Deck Plate for 4" Centerset punching. Faucets are intended for 4" Centerset punching provided on Trough. All Faucets meet NSF and Lead-Free Standards and include a 0.5 GPM (1.9 LPM) Flow Control.

**Trap Enclosures** are optionally available in two sizes 24" and 54" to conceal plumbing and soap containers mounted under the trough. Enclosures shall be fabricated of 16 gauge type 304 stainless steel with exposed surfaces polished to a #4 stain finish. (See Supplemental Sheet) **IMPORTANT:** Trap Enclosure selection should correspond with selected Faucet rough-ins: Whether a single supply rough-in for all Faucets or individual supply roughs for individual Faucets.

**Splash Guard** option is for use with multi-person Trough units and consists of a stainless steel partition to provide a more personal hand washing space for users. Splash Guard mounts to back wall and would be not suitable for use with free standing Trough applications®.

**Enviro-Glaze Powder Coated Color** is optionally available to provide a functional alternative to stainless steel finish and is provided for Trough and all optional components including Trap Cover and Splash Guard(s).

**Additional Available Options:** a Daisy (Drain) Strainer with Tailpiece and a P-Trap Assembly made of Plastic or Chrome Plated Brass. A 10" diameter, self sticking, bright yellow "Wash Your Hands" Decal is also available.

# Wash-Ware® DSW000 Series: Deluxe Wall Mounted Hand Wash Trough



## MODEL NUMBER AND OPTIONS SELECTION

### BASE MODEL NUMBER (Trough Only)

- ☐ **DSW130** Hand Wash Trough, 1 User, 30" Wide  
☐ **DSW260** Hand Wash Trough, 2 User, 60" Wide  
☐ **DSW390** Hand Wash Trough, 3 User, 90" Wide  
☐ **DSW4120** Hand Wash Trough, 4 User, 120" Wide

### Faucets (Optional)

- ☐ SW000-F50 H&C Wristblade Faucet, Gooseneck Spout  
☐ SW000-F51 H&C Wristblade Faucet, Spout  
☐ SW000-F60 S/T Sensor Operated Faucet, J Spout, Plate  
☐ SW000-F70 S/T Pushbutton Metering Faucet, Plate

**Must Specify:** ☐ 1 ☐ 2 ☐ 3 ☐ 4

### Bottle Filler (Optional)

- ☐ BF1SC Pushbutton Activated Compact Bottle Filler  
☐ BF2SC Sensor Operated Compact Bottle Filler  
☐ BF2SC-BCD Sensor Operated Compact Bottle Filler with Bottle Counter Display

**Must Specify:** ☐ 1 ☐ 2 ☐ 3 ☐ 4

### Options

- ☐ -EG Enviro-Glaze® Color Specify: \_\_\_\_\_  
☐ Splash Guard ☐ Trough ☐ TRap Cover

### Accessories

- ☐ SW000-PT Daisy Strainer, Tailpiece, 1-1/2" P-Trap, Plastic  
☐ SW000-PTC Daisy Strainer, Tailpiece, 1-1/2" P-Trap, Chrome  
☐ DSW000-SG Splash Guard, (Multi-Station Units)  
☐ WH-DECAL 10" Sticky Decal "Wash Your Hands"

### Soap

- ☐ PS1000-PS Pump Soap Dispenser

**Must Specify:** ☐ 1 ☐ 2 ☐ 3 ☐ 4

- ☐ PS1000-SSO Sensor Operated Soap Dispenser

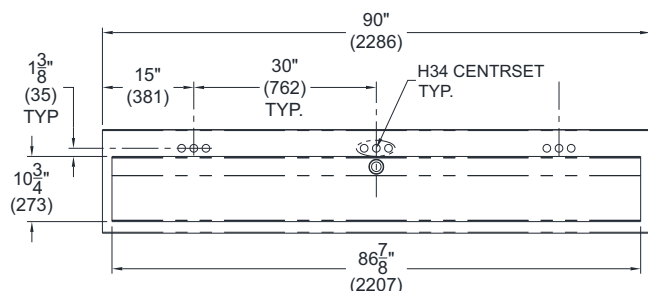
**Must Specify:** ☐ 1 ☐ 2 ☐ 3 ☐ 4

### Trap Cover (Optional)

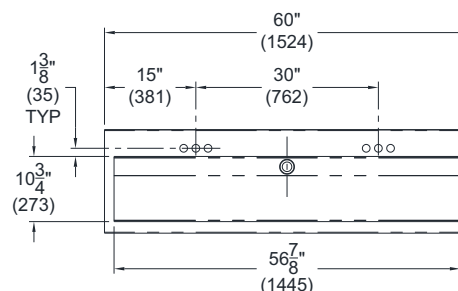
- ☐ -TC Trap Cover

See Submittal Page 3 to Select Required Style

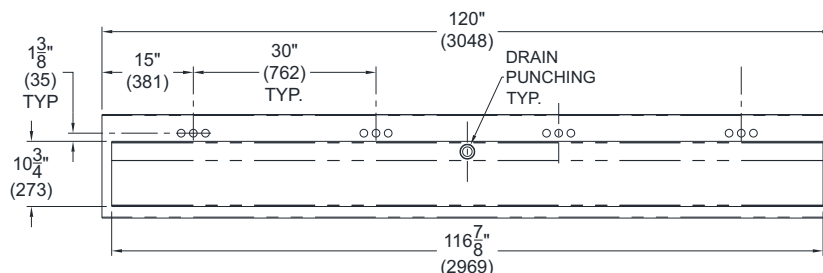
Please visit [www.acorneng.com](http://www.acorneng.com) for most current specifications.



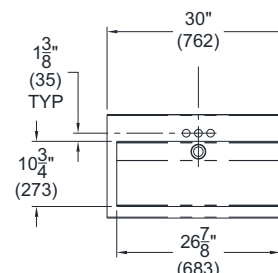
**DSW390**



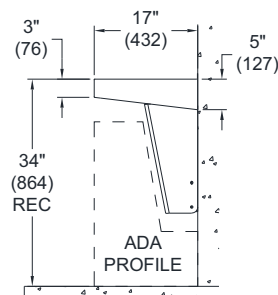
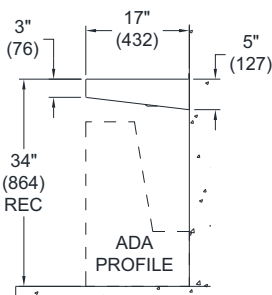
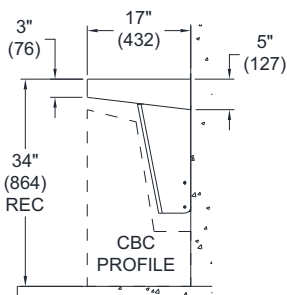
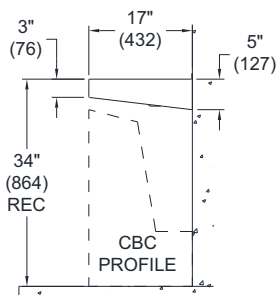
**DSW260**



**DSW4120**



**DSW130**



**WARNING:** Cancer and Reproductive Harm - [www.P65Warnings.ca.gov](http://www.P65Warnings.ca.gov)

**Important:** Installation instructions and current rough-in are furnished with each fixture. Do not rough in without certified dimensions. Dimensions are subject to manufacturer's tolerance of plus or minus 1/4" and change without notice. Acorn assumes no responsibility for use of void or superseded data. © Copyright 2007 Acorn Engineering Company

### Selection Summary

Model No. & Option \_\_\_\_\_  
 Quantity \_\_\_\_\_

### Approved for Manufacturing

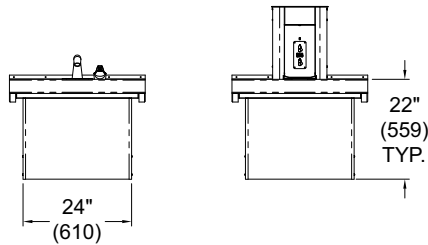
Company \_\_\_\_\_ Title \_\_\_\_\_  
 Signature \_\_\_\_\_ Date \_\_\_\_\_



**Trap Enclosure Detail -Must Specify Trap Cover Using Selection Box Below**

**DSW130**

☐ TC1



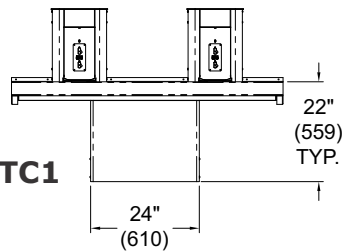
**IMPORTANT:** Trap Enclosure selection should correspond with selected Faucet rough-ins: Whether a single supply rough-in for all Faucets or individual supply roughs for individual Faucets.

**DSW260**

☐ TC2

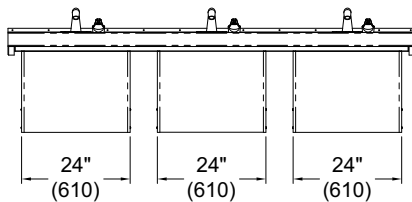


☐ TC1

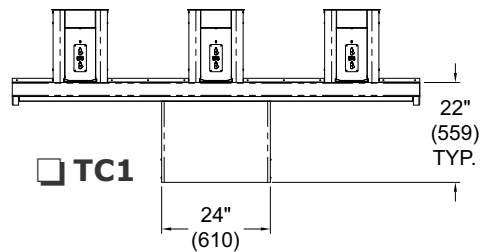


**DSW390**

☐ TC3

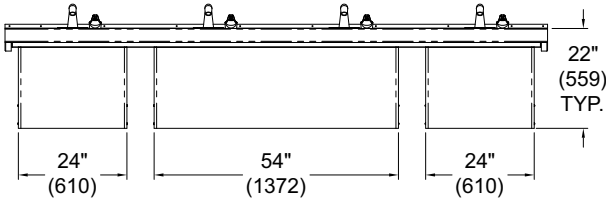


☐ TC1

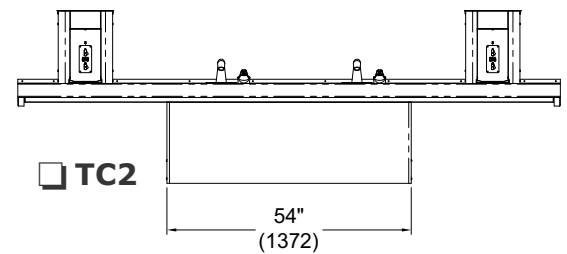


**DSW4120**

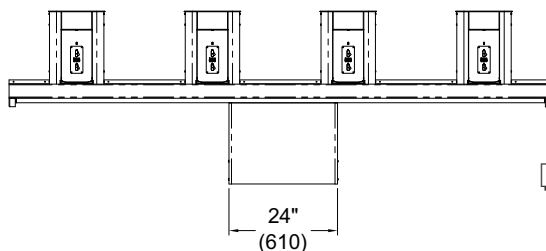
☐ TC12



☐ TC2



☐ TC1



☐ TC3

