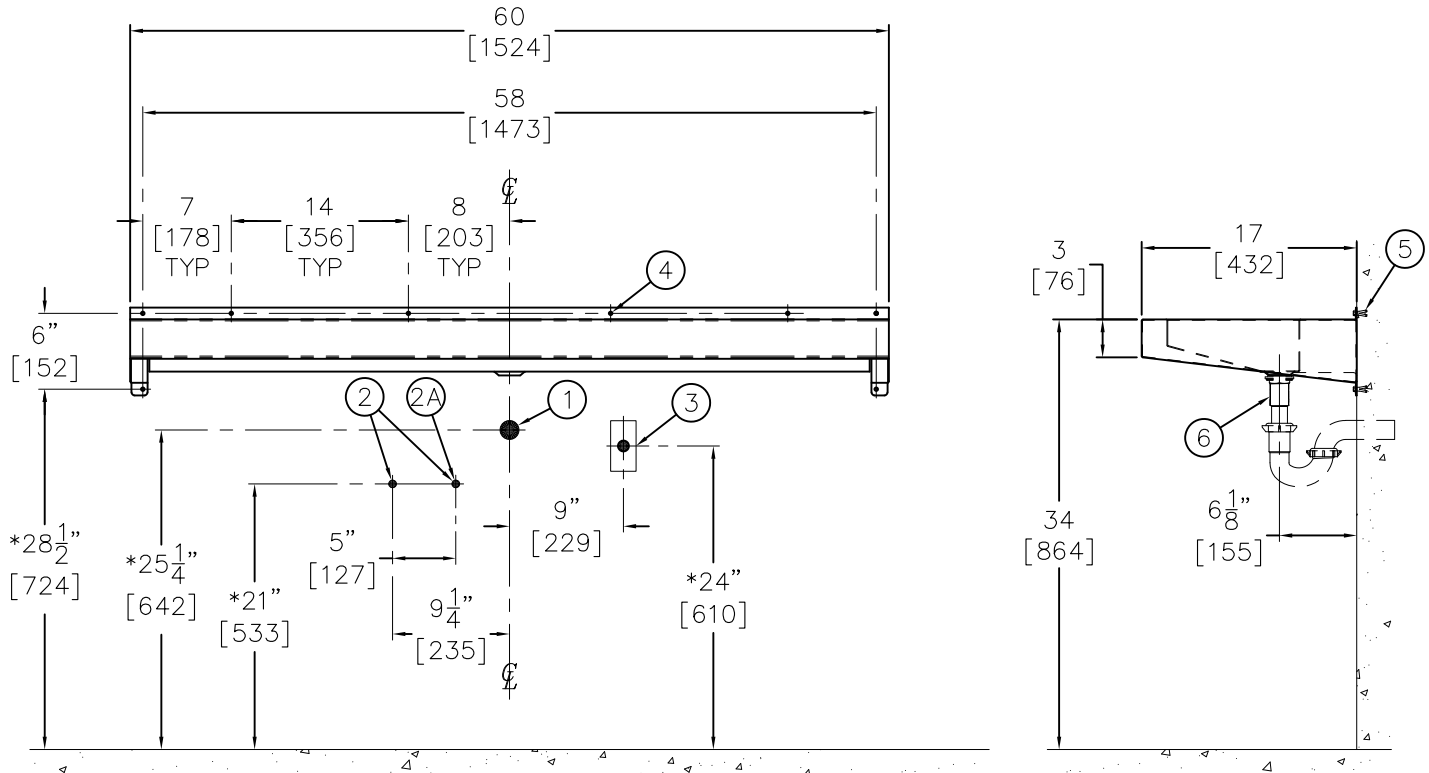


**REFERENCE DRAWINGS:**

-TC1 TRAP COVER INSTALLS	9912-631-001
-TC2 TRAP COVER INSTALLS	9912-641-001

**DIMENSIONS SHOWN ARE FOR ADA ADULT HEIGHT. ADJUST VERTICAL DIMENSIONS WITH (\*) AS NECESSARY FOR JUVENILE HEIGHTS PER FEDERAL, STATE, & LOCAL CODES**


**INSTALLATION INSTRUCTIONS**

A-ROUGH-IN FOR THE FOLLOWING:

- 1-1/2" OD WASTE OUTLET (1).
- 1/2" NPT HOT & COLD SUPPLY INLETS (2) FOR OPTIONAL FAUCET OR FAUCET BY OTHERS.
- 3/8" O.D. COLD SUPPLY INLETS (2A) FOR OPTIONAL BOTTLE FILLER.
- 120VAC, 60 Hz, 3A (MAX.) GFCI PROTECTED, ELECTRICAL RECEPTACLE (3) FOR OPTIONAL SENSOR OPERATED FAUCET, BOTTLE FILLER AND SOAP DISPENSER.
- (8) WALL MOUNTING PUNCHING (4), FOR INSTALLER PROVIDED 1/4" WALL ANCHORS AND ANCHORING HARDWARE (5).

B-ANCHOR FIXTURE TO WALL USING INSTALLER PROVIDED ANCHORING HARDWARE (5).

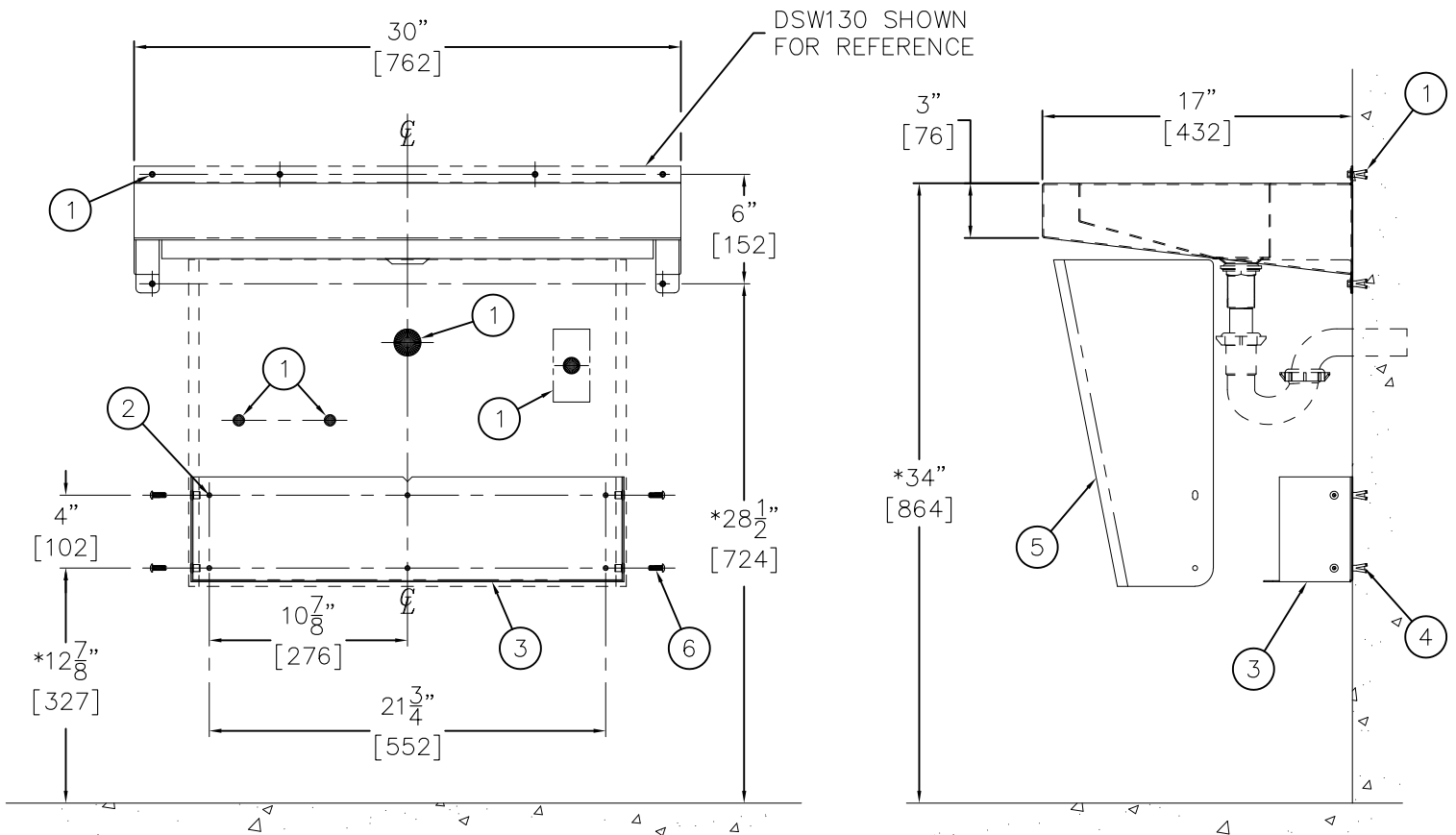
C-MAKE UP WASTE CONNECTION FOR OPTIONAL GRID STRAINER WITH P-TRAP (6) OR WASTE FITTINGS BY OTHERS.

D-FLUSH SUPPLY LINES (2) PRIOR TO MAKING UP CONNECTIONS FOR OPTIONAL FAUCET OR BOTTLE FILLER.

**REFERENCE DRAWINGS:**

DSW130 & MD-DSW130	9912-630-001
DSW260 & MD-DSW260	9912-640-001
DSW390 & MD-DSW390	9912-650-001
DSW4120 & MD-DSW4120	9912-660-001

**DIMENSIONS SHOWN ARE FOR ADA ADULT HEIGHT. ADJUST VERTICAL DIMENSIONS WITH (\*) AS NECESSARY FOR JUVENILE HEIGHTS PER FEDERAL, STATE, & LOCAL CODES**



**INSTALLATION INSTRUCTIONS:**

A-ROUGH-IN FOR THE FOLLOWING:

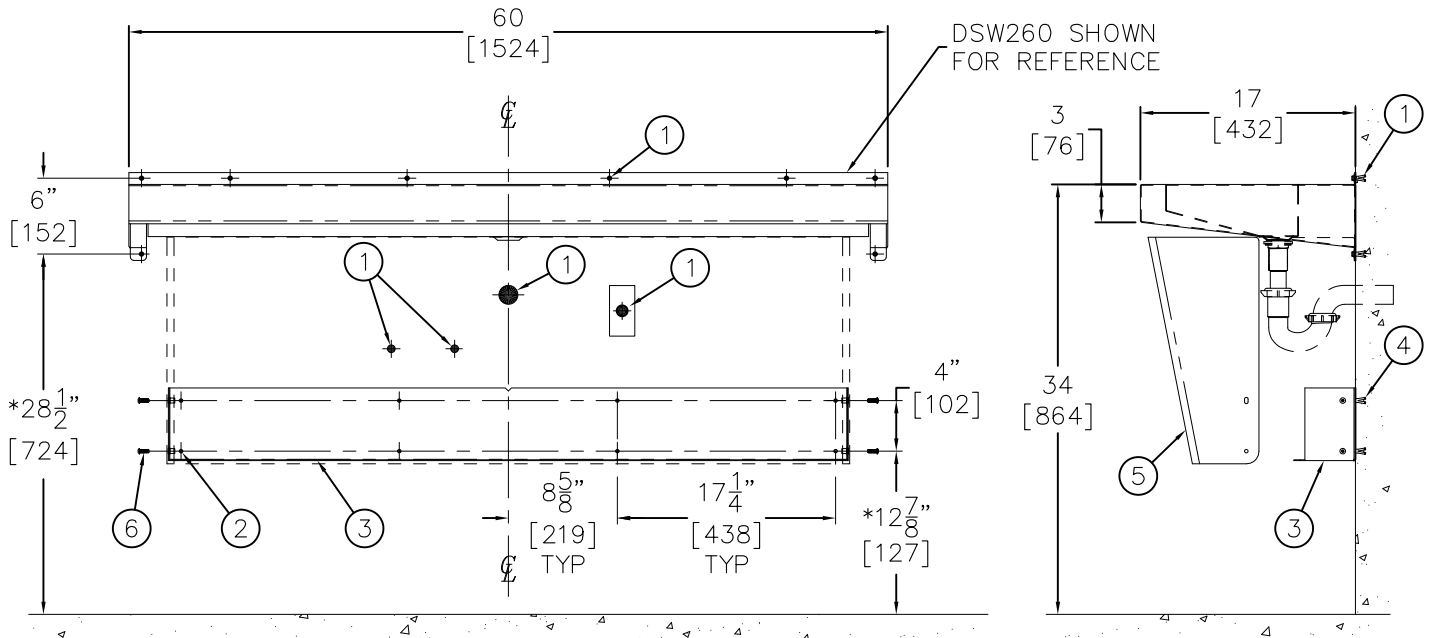
- SEE APPROPRIATE ROUGH-IN SHEET FOR ITEMS ①.
- (6) WALL MOUNTING POINTS ②, FOR TRAP ENCLOSURE MOUNTING BRACKET ③ FOR INSTALLER PROVIDED 1/4" WALL ANCHORS AND ANCHORING HARDWARE ④.

- B-ANCHOR MOUNTING BRACKET ③ TO WALL USING INSTALLER PROVIDED ANCHORING HARDWARE ④.
- C-MOUNT TRAP ENCLOSURE ⑤ TO MOUNTING BRACKET ③ WITH PROVIDED FASTENERS ⑥.

<p><b>MORRIS GROUP INTL</b> P.O. BOX 3527 Industry, CA 91744 MORRIS GROUP 15125 Proctor Ave Industry, CA 91746 INTERNATIONAL (626) 336-4561 FAX (626) 961-2200</p>	<p>TITLE <b>OPTIONAL -TC1 TRAP COVER INSTALLATION INSTRUCTION</b></p>	
	<p>MANUFACTURE DATE <b>JANUARY 2021</b> <b>TO PRESENT</b></p>	<p>DATE ISSUED <b>01/04/21</b></p> <p>DATE REVISED <b>10/27/21 A</b></p>

<b>REFERENCE DRAWINGS:</b>	
DSW260 & MD-DSW260	9912-640-001
DSW4120 & MD-DSW4120	9912-660-001

**DIMENSIONS SHOWN ARE FOR ADA ADULT HEIGHT. ADJUST VERTICAL DIMENSIONS WITH (\*) AS NECESSARY FOR JUVENILE HEIGHTS PER FEDERAL, STATE, & LOCAL CODES**



**INSTALLATION INSTRUCTIONS:**

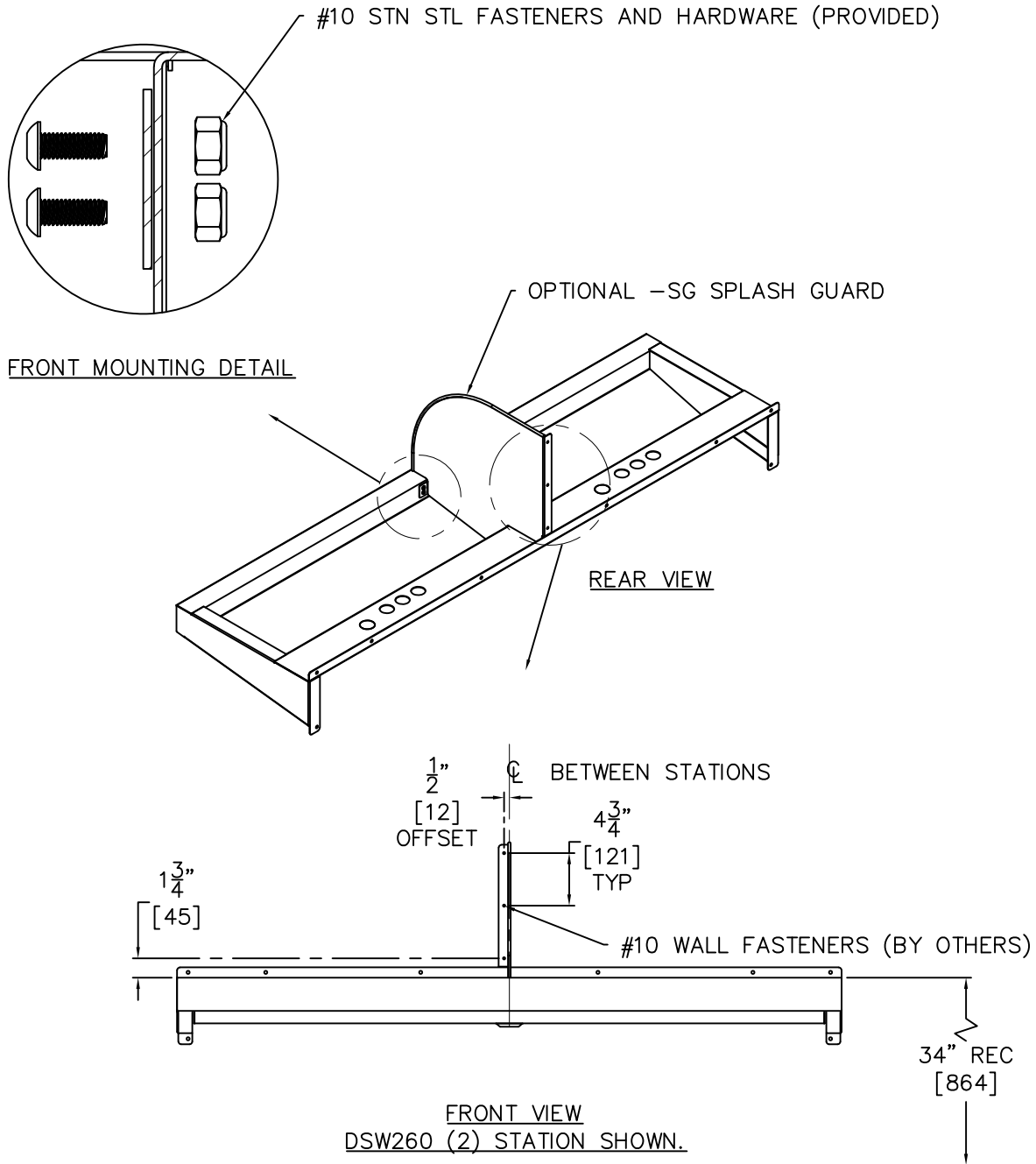
A- ROUGH-IN FOR THE FOLLOWING:

- SEE APPROPRIATE ROUGH-IN SHEET FOR ITEMS ①.
- (8) WALL MOUNTING POINTS ②, FOR TRAP ENCLOSURE MOUNTING BRACKET ③ FOR INSTALLER PROVIDED 1/4" WALL ANCHORS AND ANCHORING HARDWARE ④.

B- ANCHOR MOUNTING BRACKET ③ TO WALL USING INSTALLER PROVIDED ANCHORING HARDWARE ④.

C- MOUNT TRAP ENCLOSURE ⑤ TO MOUNTING BRACKET ③ WITH PROVIDED FASTENERS ⑥.

<p><b>MORRIS GROUP INTL</b> P.O. BOX 3527 Industry, CA 91744 MORRIS GROUP 15125 Proctor Ave Industry, CA 91746 INTERNATIONAL (626) 336-4561 FAX (626) 961-2200</p>	<p>TITLE <b>OPTIONAL -TC2 TRAP COVER INSTALLATION INSTRUCTION</b></p>	
	<p>MANUFACTURE DATE</p> <p><b>JANUARY 2021</b></p> <p><b>TO PRESENT</b></p>	<p>DATE ISSUED</p> <p><b>01/04/21</b></p> <p>DATE REVISED</p> <p><b>10/27/21 A</b></p>



NOTES:  
OPTIONAL -SG SPLASH GUARD IS LOCATED ON CENTERLINE BETWEEN STATIONS. REFER TO APPLICABLE SUBMITTAL FOR DIMENSIONAL DATA AS REQUIRED FOR 2, 3 AND 4 PERSON UNITS.

<p>MORRIS GROUP INTL P.O. BOX 3527 Industry, CA 91744 MORRIS GROUP 15125 Proctor Ave Industry, CA 91746 INTERNATIONAL (626) 336-4561 FAX (626) 961-2200</p>	<p>TITLE -SG SPLASH GUARD OPTION DSW SERIES DELUXE TROUGH</p>		
	<p>MANUFACTURE DATE</p> <p>DECEMBER 2020</p> <p>TO PRESENT</p>	<p>DATE ISSUED</p> <p>01/19/22</p>	<p>DRAWING NUMBER</p> <p>9912-642-001</p>
		<p>DATE REVISED</p>	