



Valves: R03-R04 Air-Control Replacement Valve Assembly

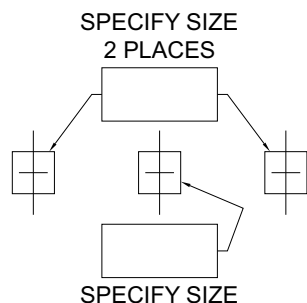
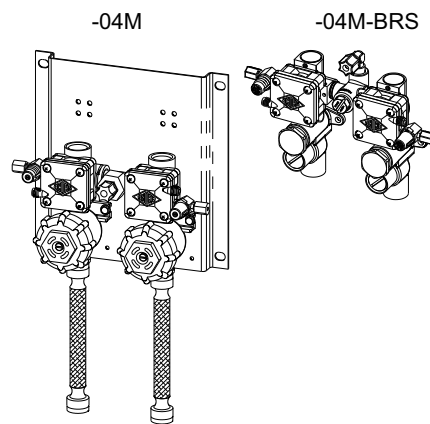
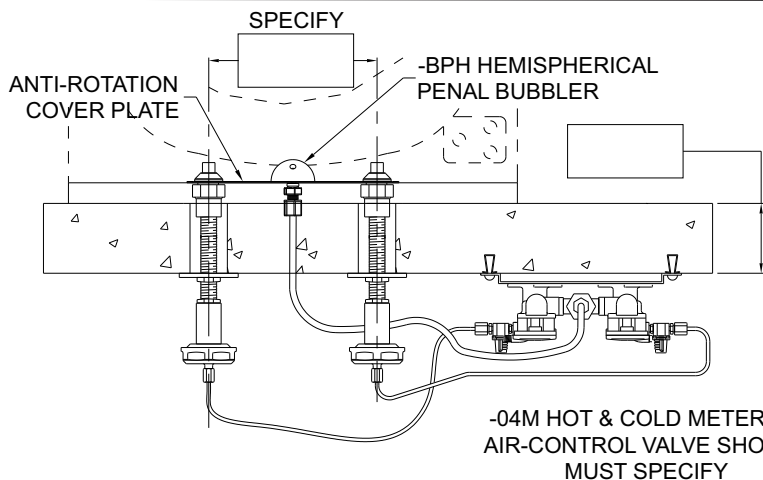
Air-Control Replacement Valve Assembly - All Lavy And Comby Fixtures

The **Air-Control Valve Assembly** is designed to replace existing valve and bubbler on stainless steel lavy and comby fixtures. The pushbutton assembly is intended to be mounted to the backsplash and support the fixture. Pushbuttons require minimum 1-5/16" diameter round or 1-1/8" square backsplash openings. When single temperature is required, a blank escutcheon is provided to maintain this feature. Valve inlets are 1/2" NPS flexible hoses or 1/2" NPTI with optional -BRS Brass Valve Body models.

Valve is an Air-Control pneumatically operated, pushbutton valve using atmospheric air. Pushbutton is vandal-resistant and requires less than 5 pounds to activate valve. Valve is direct acting, non-metering type and is optionally available as metering with non-hold open feature. Metering valve timing is adjustable from 5 to 60 seconds. Valve includes a 0.5 GPM flow control and can be remotely located up to 10 feet from the operating pushbutton. Valve and bubbler conform with lead free requirements for NSF61, Section 9, 1997 and CHSC 116875.

Regularly furnished items include a 0.5 GPM flow control, single temperature or hot and cold indexed pushbuttons, pushrods, Stainless Steel -BPH Hemispherical Penal Bubbler and an anti-rotation plate when applicable.

Please visit www.acorneng.com for most current specifications.



WALL THICKNESS AND TYPE (Must Specify)

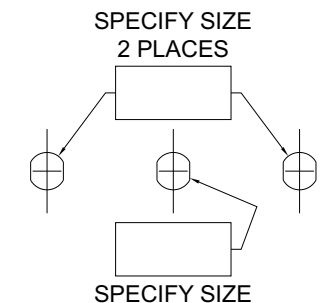
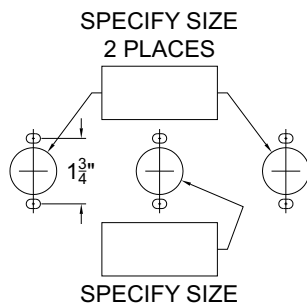
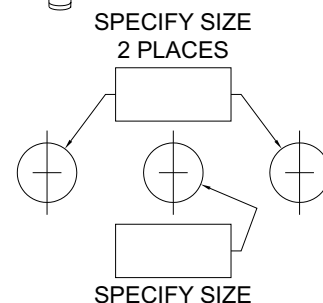
Thickness: _____ Type: __ Concrete: __
Block: __ Steel: __

**MODEL NUMBER AND OPTIONS SELECTION
BASE MODEL NUMBER**

- R03 Air-Control Valve Assy, Non-Metering, Single Temp.
- R04 Air-Control Valve Assy, Non-Metering, Hot & Cold

**Product Options
(See Penal-Ware® Model Numbers & Options Section)**

- BP Bubbler, Penal
- BRS Brass Body Valve
- LF Lavy Filler
- LBPH Less Hemispherical Penal Bubbler
- LPBP Less Pushrod Actuator (Eliminates Fixture Support)
- M Metering
- MA Manifolded Valve: __ 2 __ 3 __ 4
- MH Metering Hot Side Only
- PBH Hemispherical Pushbutton



WARNING: Cancer and Reproductive Harm - www.P65Warnings.ca.gov

<p>Important: Installation instructions and current rough-in are furnished with each fixture. Do not rough in without certified dimensions. Dimensions are subject to manufacturer's tolerance of plus or minus 1/4" and change without notice. Acorn assumes no responsibility for use of void or superseded data. © Copyright 2009 Acorn Engineering Company</p>	
<p style="text-align: center;">Selection Summary</p> <p>Model No. & Option _____</p> <p>Quantity _____</p>	<p style="text-align: center;">Approved for Manufacturing</p> <p>Company _____ Title _____</p> <p>Signature _____ Date _____</p>