



Valves: REVS Master-Trol Replacement Valve Assembly

Master-Trol Replacement Valve Assembly - All Lavy And Comby Fixtures

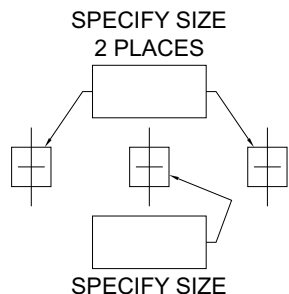
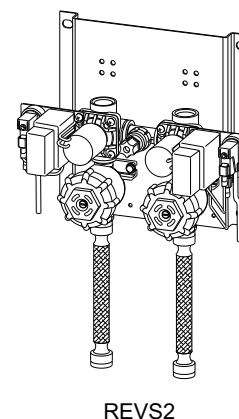
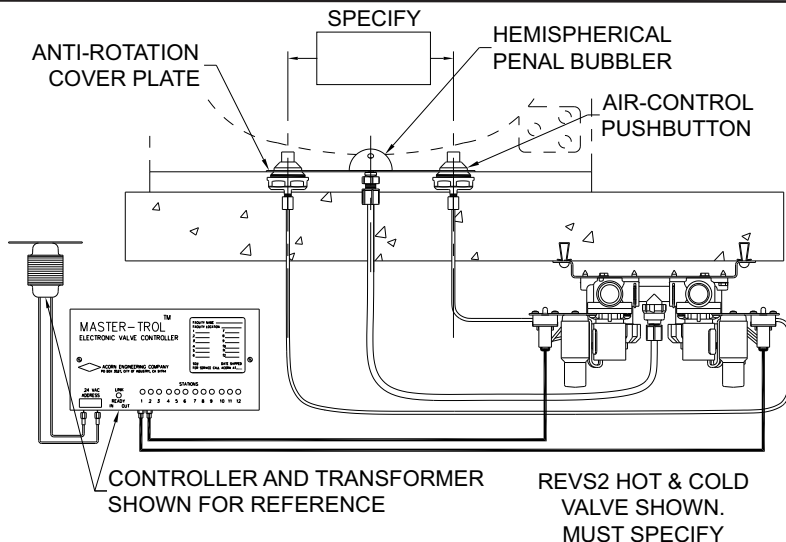
The **Master-Trol Assembly** is designed to replace the existing valve and bubbler on stainless steel lavy and comby fixtures. The pushbutton assembly is intended to be mounted to the backsplash. When single temperature is required, a blank escutcheon is provided to maintain this feature. Valve inlets are 1/2" NPS flexible stainless steel braided hoses or 1/2" NPTI with optional -BRS Brass Valve Body models.

An **unmonitored controller system** configuration consists of an Electronic Valve Controller factory preprogrammed per customer specifications. Each Electronic Valve Controller can connect up to 12 solenoid valves. **For programming and controller options see EVS submittal.**

Electronic Valve includes a 0.5 GPM flow control. Pushbutton is vandal-resistant, requires less than 5 pounds to activate valve and can be remotely located up to 50 feet from the electronic valve. Valve and bubbler conform with lead free requirements for NSF61, Section 9, 1997 and CHSC 116875.

Regularly furnished items include a 0.5 GPM flow control, single temperature or hot and cold indexed pushbuttons or piezo pushbuttons, Stainless Steel Hemispherical Penal Bubbler and an anti-rotation plate or escutcheons when applicable.

Please visit www.acorneng.com for most current specifications.



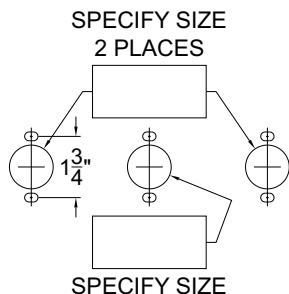
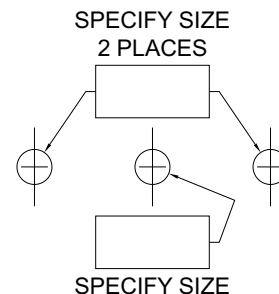
WALL THICKNESS AND TYPE (Must Specify)

Thickness: _____ Type: Concrete Block Steel

MODEL NUMBER AND OPTIONS SELECTION

BASE MODEL NUMBER

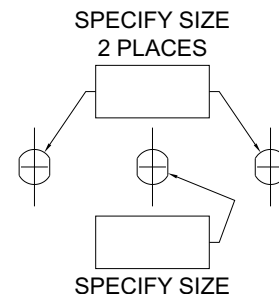
- REVS1 Electronic Valve System, Single Temp
- REVSP1 Electronic Valve System, Single Temp w/Piezo Pushbutton
- REVS2 Electronic Valve System, Hot & Cold
- REVSP2 Electronic Valve System, Hot & Cold w/Piezo Pushbuttons



Product Options

(See *Penal-Ware® Model Numbers & Options Section*)

- BP Bubbler, Penal
- BRS Brass Body Valve
- LF Lavy Filler
- LBPH Less Hemispherical Penal Bubbler
- MA Manifolded Valve: 2 3 4
- PBH Hemispherical Pushbutton



WARNING: Cancer and Reproductive Harm - www.P65Warnings.ca.gov

<p>Important: Installation instructions and current rough-in are furnished with each fixture. Do not rough in without certified dimensions. Dimensions are subject to manufacturer's tolerance of plus or minus 1/4" and change without notice. Acorn assumes no responsibility for use of void or superseded data. © Copyright 2009 Acorn Engineering Company</p>	
<p style="text-align: center;">Selection Summary</p> <p>Model No. & Option _____</p> <p>Quantity _____</p>	<p style="text-align: center;">Approved for Manufacturing</p> <p>Company _____ Title _____</p> <p>Signature _____ Date _____</p>