

HAND WASHING & HYDRATION STATIONS

FROM PORTABLE SOLUTIONS TO PERMANENT INSTALLATION, DISCOVER HAND WASHING AND BOTTLE REFILL STATIONS FOR EVERY APPLICATION.



MODEL NO. ELPS2
ELLIPSE™ HAND WASHING STATION



MODEL NO. GWQ84
OUTDOOR DRINKING FOUNTAIN,
BOTTLE FILLER AND HAND WASHING
STATION WITH PET FOUNTAIN



MODEL NO. BFC1012-BCD
EZReach™ COMPACT RETROFIT
SURFACE MOUNTED BOTTLE FILLER

UNLIMITED HAND WASHING AND BOTTLE FILLER SOLUTIONS

Hand washing stations by Acorn Engineering Company® are durable, reliable, and easy to maintain, making them ideal in commercial, educational, and other public spaces.

APPLICATIONS:

SCHOOLS • BUSINESSES / RETAIL
HEALTH CENTERS • AMUSEMENT PARKS



ACORN®
KWIK SHIP® PROGRAM

Many products available for Kwik Ship.

DELUXE WASH TROUGH® HAND WASHING SINK



MODEL NO. DSW130
ONE USER



MODEL NO. DSW260
TWO USERS



MODEL NO. DSW4120
FOUR USERS



PORTABLE WASH-WARE[®] HAND WASH SINKS

PS1010 BASE MODEL
DELUXE PORTABLE SINK



SINGLE & MULTI USER HANDS-FREE WASH-WARE® STATIONS



MODEL NO. 3506-F
SIX STATIONS FOOT OPERATED



MODEL NO. 3544-SO
FOUR STATIONS
SENSOR OPERATED



MODEL NO. 3401-F
SINGLE STATION
FOOT OPERATED



MODEL NO. ELPS2
TWO STATION
SENSOR OPERATED

626-336-4561 | ACORNENG.COM

INDOOR AND OUTDOOR STAINLESS STEEL HAND WASHING STATIONS



MODEL NO. A191400W
DELUXE Wash-N-Go!®
INDOOR HAND
WASHING STATION



MODEL NO. GWQ84
ALL-IN-ONE
Wash-N-Go!®
OUTDOOR HAND
WASHING STATION

H₂O-To-Go! HANDS FREE BOTTLE FILLERS



MODEL NO. BFC1012-BCD
**EZREACH™ COMPACT
 RETROFIT SURFACE
 MOUNTED BOTTLE FILLER**



MODEL NO. A171108X-BF2S
**VANDAL-RESISTANT SURFACE
 MOUNTED
 BOTTLE FILLER**



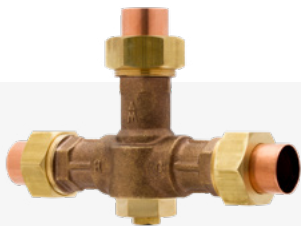
MODEL NO. BF168-BCD
**HANDS FREE STANDALONE
 BOTTLE FILLER WITH CHILLER**



MODEL NO. DSW390-BF2SC
**THREE STATION WALL
 MOUNTED BOTTLE FILLER**

626-336-4561 | MURDOCKMFG.COM

ACCESSORIES, VALVES, AND HEATERS



MODEL NO. ST7017
OMEGA® MIXING VALVE



MODEL NO. CMT SERIES
**MINI TANK POINT-OF-USE
 WATER HEATER**

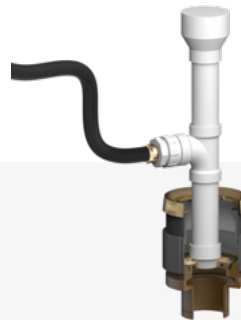


FIGURE NO. 4001P-NS-N15
**INSTA-DRAIN™
 RETROFITTABLE CLEANOUT
 ADAPTER FITTING**



OPTION NO. -FB
FOOT BUTTON

MGICONTROLS.COM
 626-336-4561

CHRONOMITE.COM
 626-937-4270

JRSMITH.COM
 334-277-8520

MURDOCKMFG.COM
 626-336-4561

SINGLE & MULTI USER HAND WASHING STATIONS

Featuring sanitary, touchless operation by sensor or foot button, these wash fountains are ideal for high-traffic, commercial locations.



MODEL NO. 3544-SO
**FOUR STATIONS
SENSOR OPERATED**



MODEL NO. 3401-F
**SINGLE STATION
FOOT OPERATED**



MODEL NO. 3402-F
**TWO STATIONS
FOOT OPERATED**



MODEL NO. 3402-SO
**TWO STATIONS
SENSOR OPERATED**



HAND WASHING SIGN

The Acorn® hand washing sign is offered in our cheerful shade of yellow, reminding all that the most important thing they can do to protect themselves from germs is also the simplest...

Wash Your Hands!



HAND
WASHING
SIGN



SIX STATIONS

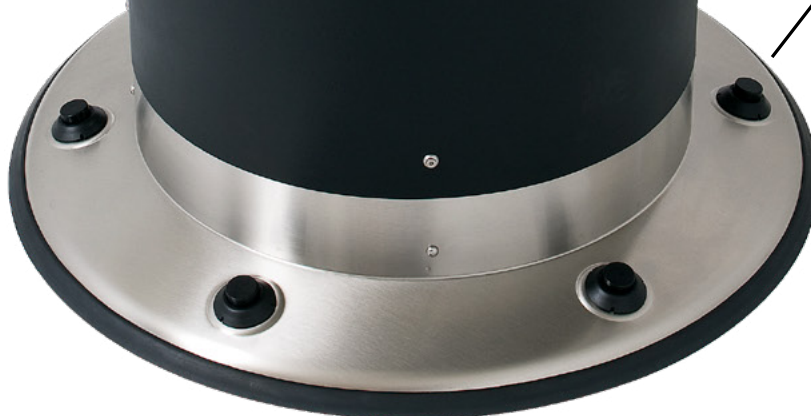
LIQUID SOAP
DISPENSER



MODEL NO. 3506-F

SIX STATIONS
FOOT OPERATED

FOOT-ACTIVATED
BUTTON



Classic Wash Fountain, Modern Design



MODEL NO. ELPS2

ELPS Series

The Ellipse™ Wash-Ware® Hand Wash Basin is a modern design for the classic wash fountain, offering a unique, appealing look at an economical price. The wall-mounted, space-saving design comes in one or two-station lengths and makes it easy to increase hand washing capacity in commercial, institutional, and other public environments.

- Unique, attractive elliptical contoured wash fountain
- Durable, stainless steel construction
- Faucet and soap dispenser options create a complete hand washing solution
- One and two station configurations
- ADA compliant when installed at proper height



Models & Descriptions

- **ELPS1**
Ellipse™ Hand Wash Basin,
1 User, 27-3/4" Wide
- **ELPS2**
Ellipse™ Hand Wash Basin,
2 User, 48" Wide



MODEL NO. ELPS1

Faucets

(Optional, Qty (1) provided for each station)

- **SW000-F50**
H&C Wristblade Faucet,
Gooseneck Spout
- **SW000-F51**
H&C Wristblade Faucet, Spout
- **SW000-F61**
S/T Sensor Operated Faucet,
J Spout, Plate
- **SW000-F70**
S/T Pushbutton Metering
Faucet, Plate

Accessories

- **SW000-PT**
Daisy Strainer, Tailpiece, 1-1/2" P-Trap,
Plastic
- **SW000-PTC**
Daisy Strainer, Tailpiece, 1-1/2" P-Trap,
Chrome



MODEL NO. SW000-PT



MODEL NO. SW000-PTC

Options

- **-EG**
Enviro-Glaze® Color Basin and
Trap Cover

Soap Dispenser

(Qty (1) provided for each station)

- **PS1000-PS**
Pump Soap Dispenser
- **PS1000-SSO**
Sensor Operated Soap Dispenser



MODEL NO. ELPS2

SINGLE USER PORTABLE HAND WASH SINKS



Portable Wash-Ware® sinks are ideal for adding hand washing capabilities quickly. Without the need for plumbing and piping, they can be quickly set up and moved to the most effective locations.



PS1010 BASE MODEL
(SHOWN WITH ACCESSORIES)
DELUXE STAINLESS PORTABLE SINKS

Options and accessories are available for certain models.
Please visit the Acorn® website or contact a representative for details.



From high guest traffic to demanding climates,
parks have unique needs.

WE CAN HELP.



**DELUXE PORTABLE
WASH-WARE® SINK**
PS1010 – BASE MODEL
(SHOWN WITH ACCESSORIES)

DELUXE STAINLESS PORTABLE SINKS!

Garden hoses or onboard water tanks supply these portable indoor/outdoor sinks with fresh water, and integrated casters allow for easy movement. Units ship assembled.



DELUXE MODELS

MODEL NO. PS1010
DELUXE MODEL

- Activated with Foot Pump
- Self-Contained Unit
- Fresh/waste water tanks provided

MODEL NO. PS1015
DELUXE MODEL

- 3/4" supply hose connection
- 3/4" waste hose connection

MODEL NO. PS1020
DELUXE MODEL

- 3/4" supply hose connection
- Waste tank provided

MODEL NO. PS1030
DELUXE MODEL

- On-demand electric pump
- Fresh water tank provided
- Waste tank provided

MODEL NO. PS1040
DELUXE MODEL

- 3/4" supply hose connection
- Waste tank provided
- Mini-tank water heater



**PROVIDING
HAND WASHING
CAPABILITIES IN
HARD-TO-REACH
LOCATIONS.**

**Optional
Backsplash with
Accessories**

Trash Can

Paper Towel Holder

Foot Pump



PS1010 BASE MODEL
(SHOWN WITH ACCESSORIES)

DELUXE WASH TROUGH HAND WASHING SINK



MODEL NO. DSW390-F61

- Multiple configurations to meet your needs
- Constructed from durable stainless steel
- Suitable for indoor or outdoor locations

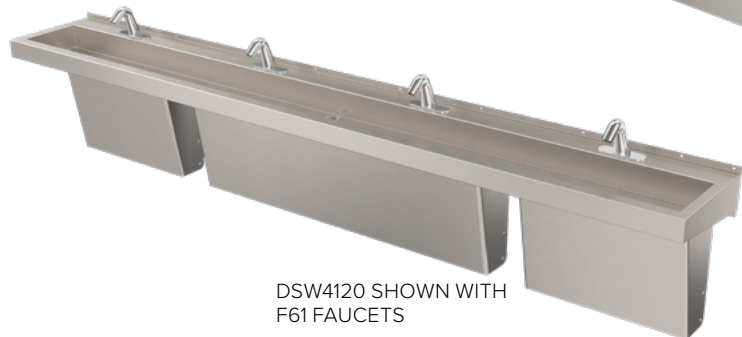
Acorn Engineering Company offers hand washing in one convenient, space-saving unit with the Deluxe Stainless Steel Wall-Mounted Hand Wash Trough. The space-saving design allows for hand washing to fit in small spaces and the units can be placed indoors or out, providing a consistent look.



DSW130 SHOWN WITH
F61 FAUCET



DSW260 SHOWN WITH
F61 FAUCETS



DSW4120 SHOWN WITH
F61 FAUCETS



BOTTLE FILLERS

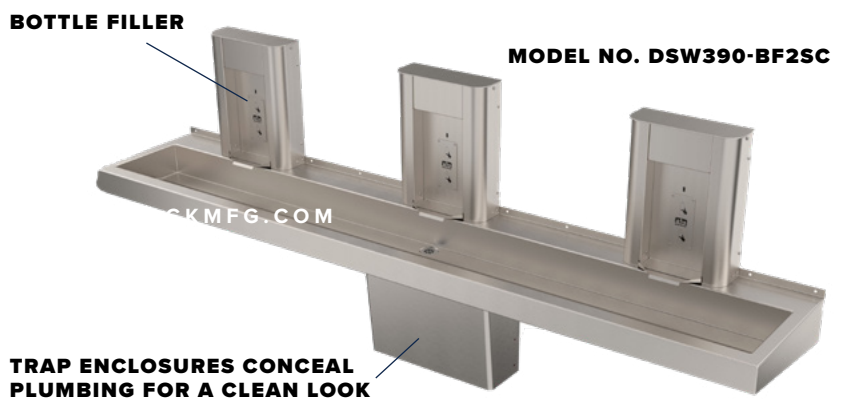
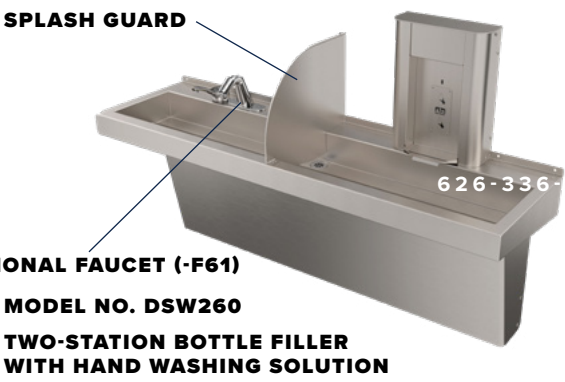
MODEL NO. DSW390-F61

Deluxe Trough with Bottle Filler

Space-Saving Bottle Filling Stations Where You Need Them

PATENT PENDING

Murdock Manufacturing offers bottle fillers in multiple configurations to meet your needs with the space-saving Deluxe Stainless Steel Wall-Mounted Trough.





MODEL NO. A191400W
(SHOWN WITH OPTIONAL SOAP
DISPENSER)



MODEL NO. BF168-BCD

DELUXE Wash-N-Go![®] HAND WASHING STATION

The Murdock Deluxe Wash-N-Go! station is ideal for any commercial, educational, or business location that prizes aesthetics as highly as health.

- Stainless Steel J-Spout Faucet
- Touchless Sensor Operation
- Laminar Flow
- Stylish Design
- ADA-compliant
- Warm water heater available



MODEL NO. CM12L/120 104F
**CHRONOMITE[®] INSTANT-FLOW[®]
C-MICRO[®] POINT-OF-USE
THERMOSTATIC TANKLESS
WATER HEATER (OPTIONAL)**

OUTDOOR Wash-N-Go!® HAND WASHING STATION

- All-stainless steel construction
- Sensor-operated faucets
- Red, blue, green, and custom colors available
- ADA compliant



PEDESTAL

MODEL NO. GWJ85

- Modern design
- Optional pet fountain may be added



WALL MOUNTED

MODEL NO. GWC75

- Ideal for small spaces



ALL-IN-ONE

MODEL NO. GWQ84

- Ideal for high-traffic locations
- Multi-functional
- All-Stainless Steel Construction
- Hand Washing sink
- Touchless bottle filler
- Drinking fountain
- Pet fountain (optional)
- Foot button operation

H₂O-To-Go!

MURDOCK® BOTTLE FILLERS:

KEEPING STUDENTS HYDRATED



Model No. BF16-BCD

H₂O-To-Go!® Bottle Fillers provide a touch-free way for students to get drinking water.



Model No.
BF168-BCD

CRISP, CLEAN, CHILLED WATER!

TOUCHLESS BI-LEVEL DRINKING FOUNTAIN WITH BOTTLE FILLER

MODEL NO. A172408F-UG-SO-BF12-BCD



FEATURES AND BENEFITS

- FULLY TOUCHLESS SENSOR OPERATION
- ADA-HEIGHT DRINKING FOUNTAIN AND BOTTLE FILLER
- STAINLESS STEEL CONSTRUCTION
- SURFACE-MOUNTED FOR EASY INSTALL

EZReach™ COMPACT SURFACE MOUNTED CHILLED BOTTLE FILLER



The Murdock® EZReach Compact Bottle Filler is the ideal choice for small spaces. It provides the same fresh drinking water as full-size bottle fillers but features a two-thirds-depth wall projection.

FEATURES AND BENEFITS

- Sanitary sensor operation
 - Crisp, chilled water
 - Surface-mounted for easy install
- Front access panel for easy maintenance
 - Perfect for kids!
 - 12" wall projection (instead of 18")



MODEL NO. BFEZ168-BCD

EZReach COMPACT CHILLED BOTTLE FILLER

PATENT PENDING

VANDAL-RESISTANT SURFACE MOUNTED BOTTLE FILLER

MODEL NO. A171108X-BF2S

This retrofit stainless steel bottle filler is vandal-resistant, perfect for locations that need a little extra security.

DURABLE STAINLESS STEEL CONSTRUCTION



FEATURES AND BENEFITS

- 8 GPH chiller
- Heavy Duty / Vandal Resistant
- Stainless steel or powder coat finish
- Touchless sensor or mechanical button operation
- Ideal for retrofit applications
- Easy filter replacement with drop-down door (Option -DD)



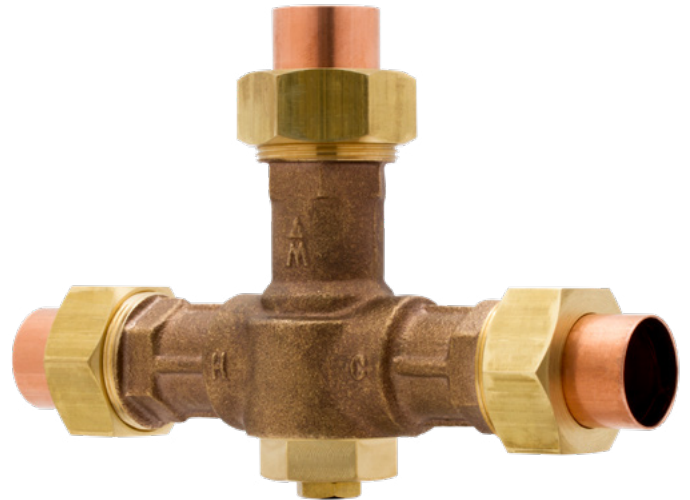
PATENT PENDING

OPTIONAL POINT-OF-USE MIXING VALVES

PROTECT AGAINST DANGEROUSLY HOT WATER WITH MGI CONTROLS® MIXING VALVES!



MODEL NO. STP7069
PATENT NO. 9,898,017



MODEL NO. ST7017
PATENT NO. 9,898,017

Alpha[®] MIXING VALVE

MODEL NO. STP7069

Temperature Adjustment Range:
85° to 115° F

- Sink / Hand Washing Station Tempering Valve
- Use for one or two sinks
- Noryl body/bonnet
- Corrosion- and lime-resistant

Standards: IAPMO-certified ASSE 1070 and 1069, CSA B125.3, cUPC, Lead Free

Omega[®] MIXING VALVE

MODEL NO. ST7017

Temperature Adjustment Range: 100° to 130° F

- Engineered Tempering Valve
- Lead-free DZR brass body
- Can be used as a hot water extender
- Does not require a continuously recirculating pump

Standards: IAPMO-certified ASSE 1070 and 1017, CSA B125.3, Lead Free

TEMPERING VALVE

MODEL NO. ST7069

- For point-of-use fixtures
- Brass casting
- Corrosion-resistant internal components
- Lead Free

STANDARDS: IAPMO-certified ASSE1069, ASSE1070, CSA B125.3, NSF/ANSI 61, cUPC, Lead Free

MODEL NO. ST7069
PATENT NO. 9,898,017



MODEL NO. 3802
ACORN® MERIDIAN-EDGE® BASIN

OPTIONAL ELECTRIC WATER HEATERS

MINI TANK WATER HEATER

MODEL NO. CMT SERIES



Temperature adjustment range: 50° to 140° F

FEATURES AND BENEFITS:

- Compact, space-saving design
- Easy operation
- Wide temperature adjustment range

IDEAL APPLICATIONS:

- Single hand washing sink

Standards: UL, UL-C

INSTANT-FLOW® C-MICRO® POINT-OF-USE THERMOSTATIC TANKLESS WATER HEATER

MODEL NO. CM SERIES



Temperature adjustment range 104° to 125° F

FEATURES & BENEFITS:

- No mixing valve required
- Meets CAL GREEN and LEED v4 low flow requirements
- Utilizes digital microprocessor technology to maintain constant temperature
- 99% energy efficient

IDEAL APPLICATIONS:

- Hand washing sinks

Standards: ADA, UL, UPC and IPAMO, ETL

PATENT PENDING

INVIZIBLE® WATER HEATER

MODEL NO. Z SERIES



**SHOWN: MODEL NO. Z-S1616D
CM MODEL WITH
ELECTRICAL DISCONNECT**

FEATURES AND BENEFITS

- Recessed wall box conceals water heater
- Fits CM, CMI, and R Series water heaters
- Easy install and access
- Includes integral mixing valve (CMI models)

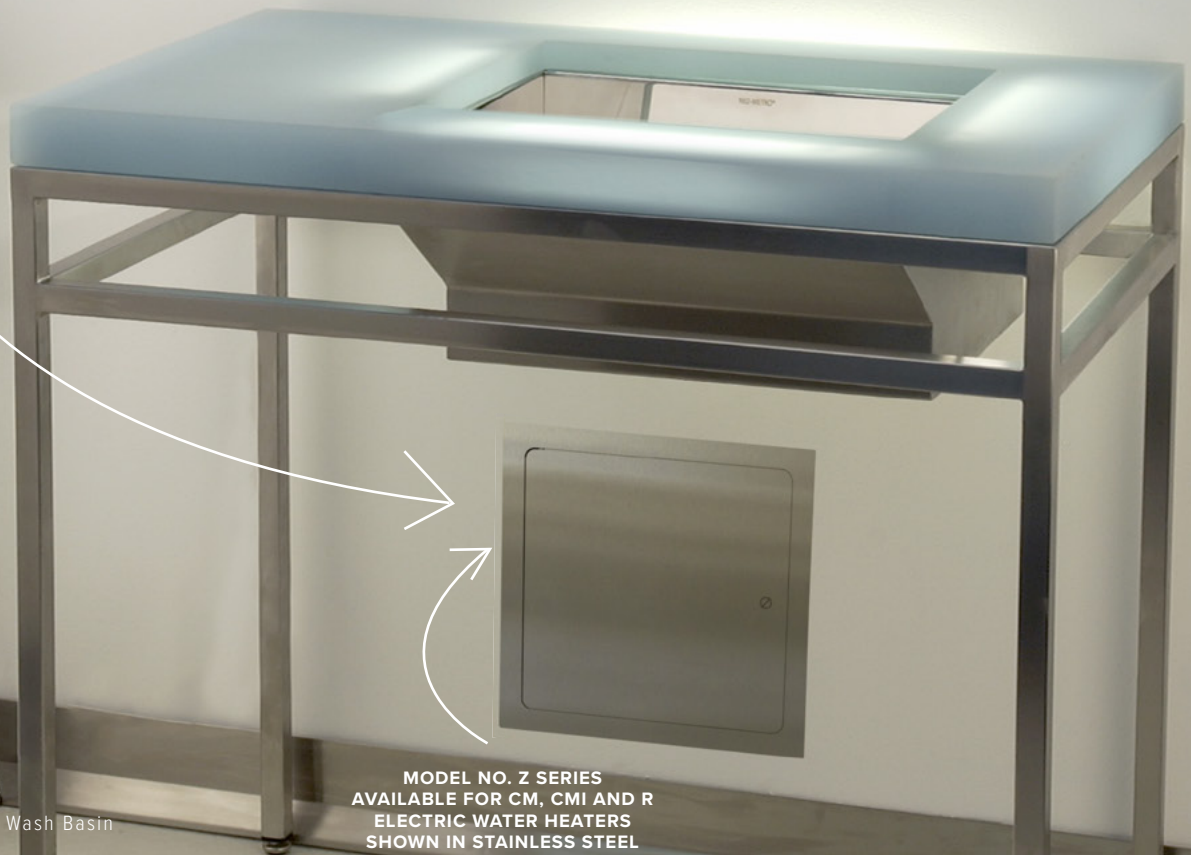
IDEAL APPLICATIONS:

- Public sinks
- Locations where heater cannot be concealed within the sink cabinet

Standards: ASSE 1069, ASSE 1070 (CMI Models), CSA B125.3-12 (CMI Models), ADA, UL, IAPMO, UPC.

PATENT PENDING

INVIZIBLE



MODEL NO. 9108
Neo-Metro by Acorn EBB® Wash Basin

MODEL NO. Z SERIES
AVAILABLE FOR CM, CMI AND R
ELECTRIC WATER HEATERS
SHOWN IN STAINLESS STEEL



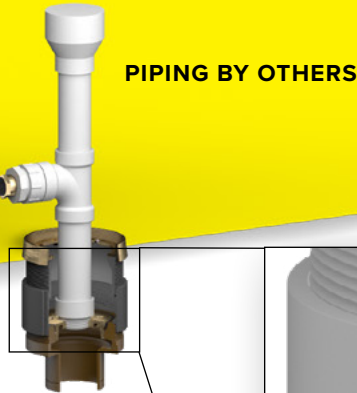
JAY R. SMITH MFG. CO.
MEMBER OF MORRIS GROUP INTERNATIONAL

MODEL NO. PS1115
ACORN®
DELUXE STAINLESS
PORTABLE SINK



HAND WASH ANYWHERE!

WITH THE SMITH INSTA-DRAIN™ RCA FITTING!



RETROFITTABLE

LEVERAGE EXISTING CLEANOUTS TO ADD DRAINAGE.

CLEANOUT

SWAP ADAPTER ON AND OFF AS NECESSARY.

ADAPTER

QUICK AND EASY INSTALL.

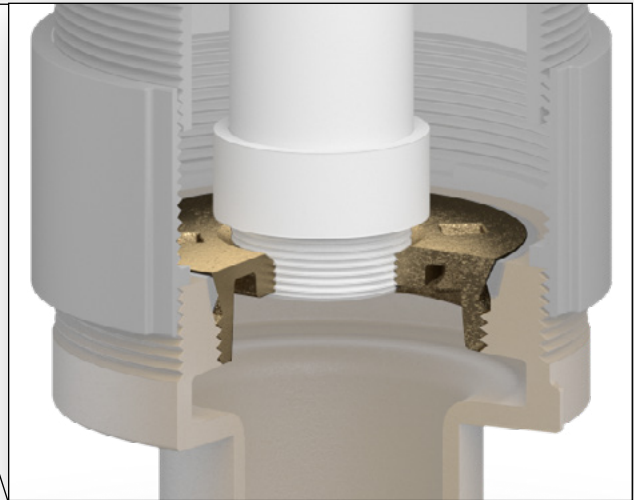


FIGURE NO. 4001P-NS-N15
GASKET SEAL ADAPTER PLUG

The ingenious Insta-Drain adapter from Jay R. Smith Mfg. Co. is designed to convert Smith cleanouts to accommodate drainage from portable sinks, and easily revert back to their original function when hand washing needs change.



SIMPLE 4-STEP PROCESS

THAT'S IT!

TO RETROFIT A SMITH CLEANOUT...

1. REMOVE COVER
2. REMOVE EXISTING PLUG AND SAVE
3. INSTALL ADAPTER PLUG



4. CONNECT PIPING (BY OTHERS)
BETWEEN SINK AND DRAIN

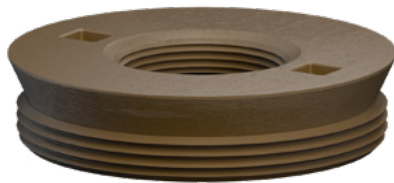
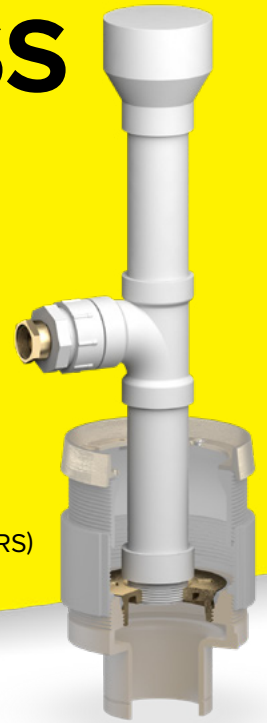


FIGURE NO. 4001P-NS-N15
GASKET SEAL ADAPTER PLUG

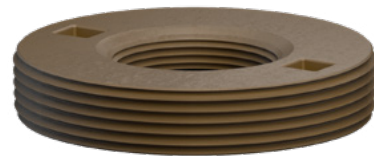


FIGURE NO. 4003P-4NS-N15
NPT ADAPTER PLUG

WORKS WITH ANY SMITH CLEANOUT UP TO 4" CONNECTION SIZE!

**COMPATIBLE WITH MOST PORTABLE SINKS, INCLUDING
ACORN'S DELUXE PORTABLE WASH-WARE® UNIT!**

TO RETROFIT A SMITH FLOOR DRAIN...

1. REMOVE GRATE
2. SECURE FUNNEL TO GRATE
3. REINSTALL GRATE
4. RUN PIPING (BY OTHERS) FROM SINK TO DISCHARGE INTO FUNNEL

FIGURE NO. 3591-NS FUNNEL

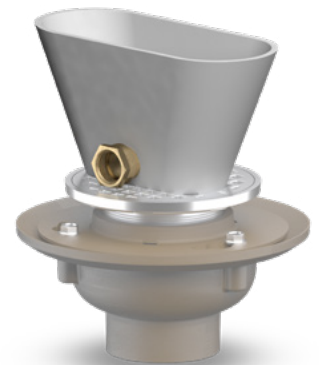


FIGURE NO. 2005Y03-A06 DRAIN
(ILLUSTRATED)

MORRIS GROUP INTERNATIONAL

WWW.MORRISGROUPINT.COM

Manufacturing Divisions

WATER CONTROLS



DRAINAGE



PLUMBING FIXTURES & ACCESS



murdock



FIRE PROTECTION



MANUFACTURING SUPPORT



Sales & Distribution



UNITED KINGDOM



ELMCO + ASSOC.



SILVER STATE



STEWART



MORRIS/LEE LTD.
CANADA



DUBAI
UNITED ARAB
EMIRATES



MORRIS INDUSTRIES
MEXICO



SWORDS



STREET ADDRESS
15125 PROCTOR AVENUE
CITY OF INDUSTRY, CA 91746

MAILING ADDRESS
P.O. BOX 3527
CITY OF INDUSTRY, CA 91744

PHONE: (626) 336-4561
E-MAIL: INFO@ACORNENG.COM
L1001482
1124