

# Model S1300

Pedestal Mounted Emergency Shower,  
Plastic Showerhead



## SPECIFICATIONS:

Model S1300 is a pedestal mounted emergency shower with a plastic showerhead and a 1" stay-open ball valve with a pull rod.

## STANDARD EQUIPMENT:

**Showerhead:** Yellow, ABS plastic 7-3/8" diameter showerhead with a 20 gpm flow regulator. An anti-microbial agent is molded into the ABS material, providing integrated protection.

**Valve:** 1" NPT rough chrome plated brass stay-open ball valve. Unit is provided with a stainless steel actuator arm and a 29" stainless steel pull rod.

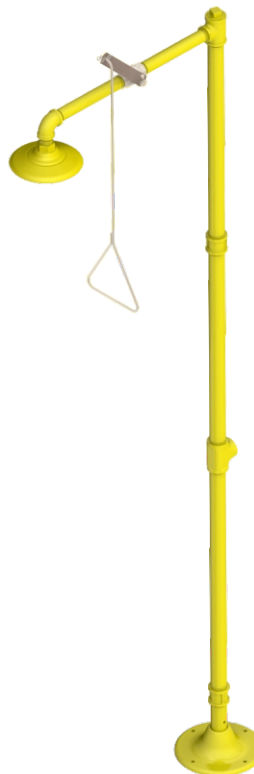
**Water Supply:** 1-1/4"NPT female threaded side or top inlet.

**Piping & Mounting:** Schedule 40 galvanized steel piping and a 9-1/8" diameter cast iron floor flange with a yellow powder coated finish.

**Universal Sign:** ANSI compliant, vertical identification sign.

**Weekly Test Tag:** A water proof test card to record the date and inspector's name for weekly functional testing of the unit.

Model: S1300



## OPTIONAL ACCESSORIES:

Additional costs may be incurred

- AL2 Electric alarm with flashing light and horn
- ET71-2-BVS-OTG Thermostatic mixing valve is ASSE Listed per the ASSE 1071 standard. The tepid output water complies with ANSI Z358.1 standard. Valve includes Ball Valve Shut-offs, Outlet Temperature Gauge
- FLW1 Flow switch, single pole
- MC1 Modesty curtain for horizontal showers
- MS1 MAP (magnetically actuated proximity) switch, for one (1) actuator
- PR60 60" pull rod
- SV1 1" stainless steel ball valve



Member of  
U.S. Green  
Building Council



Recyclable  
Product

Acorn Safety assumes no responsibility for use of void or superseded data. © Copyright Acorn Safety®, City of Industry, CA, Division of Acorn Engineering Company®, Member of Morris Group International™. Please visit [www.acorneng.com](http://www.acorneng.com) for most current specifications.

Product carries the following certifications:



Submittal # **S1300**  
[SHR] Date: 07/24/17

Test rating conditions are compliant to ANSI Z358.1



Division of  
Acorn Engineering Company®,  
Member of  
Morris Group International™

**ACORN SAFETY**

P.O. Box 3527  
City of Industry, CA  
91744 U.S.A.

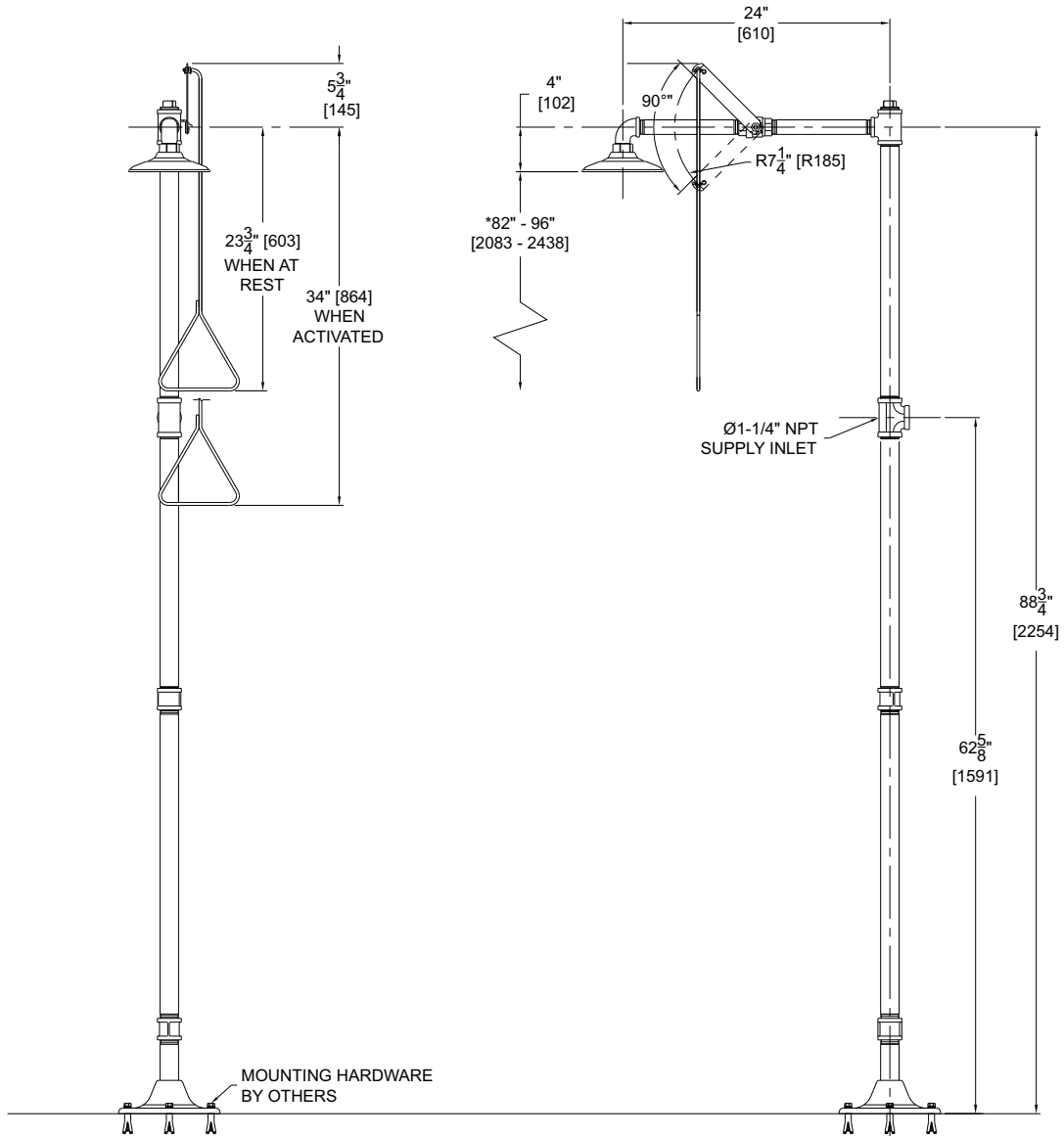
Phone 800-591-9372  
626-855-4804

[www.acorneng.com](http://www.acorneng.com)

# TECHNICAL DIMENSIONS

All dimensions are subject to manufacturer's tolerance of plus or minus 1/2" nominal and subject to change without notice. Acorn Safety® assumes no responsibility for use of void or superseded data. Dimensions may change with the addition of optional accessories. © Acorn Safety®, A Division of Acorn Engineering Company®, Member of Morris Group International™. Please visit [www.acorneng.com](http://www.acorneng.com) for most current specifications.

**Model S1300 : Pedestal Mounted Emergency Shower, Plastic Showerhead**



**GENERAL NOTES:**

1. ALL DIMENSIONS ARE IN INCHES [MM].
- \*2. ANSI Z358.1 REQUIRES THE SHOWER HEAD TO BE MOUNTED BETWEEN 82" - 96" [2083 - 2438] ABOVE THE FINISHED FLOOR WITH A 16" [406] MINIMUM RADIUS UNOBSTRUCTED.
3. ANSI Z358.1 REQUIRES PULL ROD TO BE MOUNTED NO MORE THAN 69" [1752] FROM THE THE FINISHED FLOOR.

**⚠ WARNING:** Cancer and Reproductive Harm - [www.P65Warnings.ca.gov](http://www.P65Warnings.ca.gov)

**S1300** Date: 07/24/17

Acorn Safety warrants that its products are free from defects in material or workmanship under normal use and service for a period of one year from date of shipment. Acorn's liability under this warranty shall be discharged solely by replacement or repair of defective material, provided Acorn is notified in writing within one year from date of shipment, F.O.B. Industry, California.

SELECTION SUMMARY & APPROVAL FOR MANUFACTURING

Model Number & Options \_\_\_\_\_ Quantity \_\_\_\_\_

Company \_\_\_\_\_

Contact \_\_\_\_\_ Title \_\_\_\_\_

Signature (Approval for Manufacturing) \_\_\_\_\_ Date \_\_\_\_\_



**800-591-9372**  
or 626-855-4804  
[www.acorneng.com](http://www.acorneng.com)