

Model S3160-RA

Barrier Free Combination Station, Recessed Activation, Eye/Face Wash, Recessed Mounted Emergency Shower, Stainless Steel Showerhead



SPECIFICATIONS:

Model S3160-RA is a barrier free, recessed activated, eye/face wash with ABS plastic eye/face wash spray heads and a vertically mounted emergency shower with a recessed stainless steel showerhead. Eye/face wash swings down over the floor from the recessed cabinet and the water flow is activated automatically. The eye/face wash flow is terminated once the unit has been swung back up into its original position for storage.



NOTE: When Installed at the appropriate height, unit may comply with some but not all requirements for ADA.

STANDARD EQUIPMENT:

Showerhead: Stainless steel, 8-7/8" diameter showerhead with a flange for flush mounting to the ceiling and a 20 gpm flow regulator.

Shower Valve: 1" rough chrome plated brass stay-open ball valve installed inside a wall mounted, fully recessed stainless steel enclosure with a vandal resistant access panel and an actuator that remains fully recessed, even when the unit is activated.

Shower Water Supply: 1" NPT female threaded brass inlet.

Spray Head Assembly: ABS yellow plastic eye/face wash heads, internal flow controls and filters to remove debris from the water. An anti-microbial agent is molded into the ABS material, providing integrated protection.

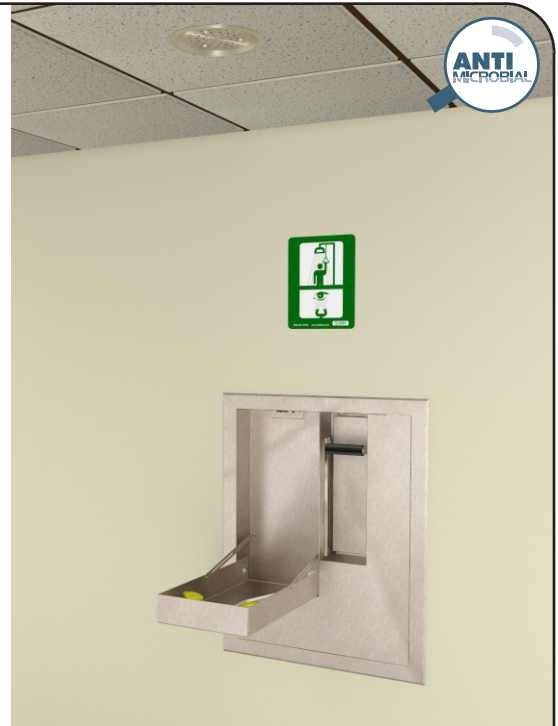
Eye/Face Wash Valve: Swing down valve has a 316 stainless steel valve housing and is mounted inside the recessed, wall mounted enclosure and has a 50 mesh inline strainer.

Eye/Face Wash Water Supply: 1/2" NPT female threaded brass inlet.

Universal Sign: ANSI compliant, vertical identification sign.

Weekly Test Tag: A waterproof test card to record the date and inspector's name for weekly functional testing of the unit.

Model: S3160-RA



Shown with optional -PAN

OPTIONAL ACCESSORIES:

Additional costs may be incurred

- AL3 Electric alarm for recessed laboratory applications
- AS All stainless steel
- ET71-2-BVS-OTG Thermostatic mixing valve is ASSE Listed per the ASSE 1071 standard. The tepid output water complies with ANSI Z358.1 standard. Valve includes Ball Valve Shut-offs, Outlet Temperature Gauge
- FLW1 Flow switch, single pole
- MC3 Modesty curtain for wall showers
- PAN Waste water drain pan (eye/face wash only)
- SV1 Stainless steel 1" ball valve



Member of
U.S. Green
Building Council



Recyclable
Product

Acorn Safety assumes no responsibility for use of void or superseded data. © Copyright Acorn Safety®, City of Industry, CA, Division of Acorn Engineering Company®, Member of Morris Group International™. Please visit www.acorneng.com for most current specifications.

Submittal # **S3160-RA**
[CMB] Date: 08/21/17

Product carries the following certifications:



Test rating conditions are compliant to ANSI Z358.1



Division of
Acorn Engineering Company®,
Member of
Morris Group International™

ACORN SAFETY

P.O. Box 3527
City of Industry, CA
91744 U.S.A.

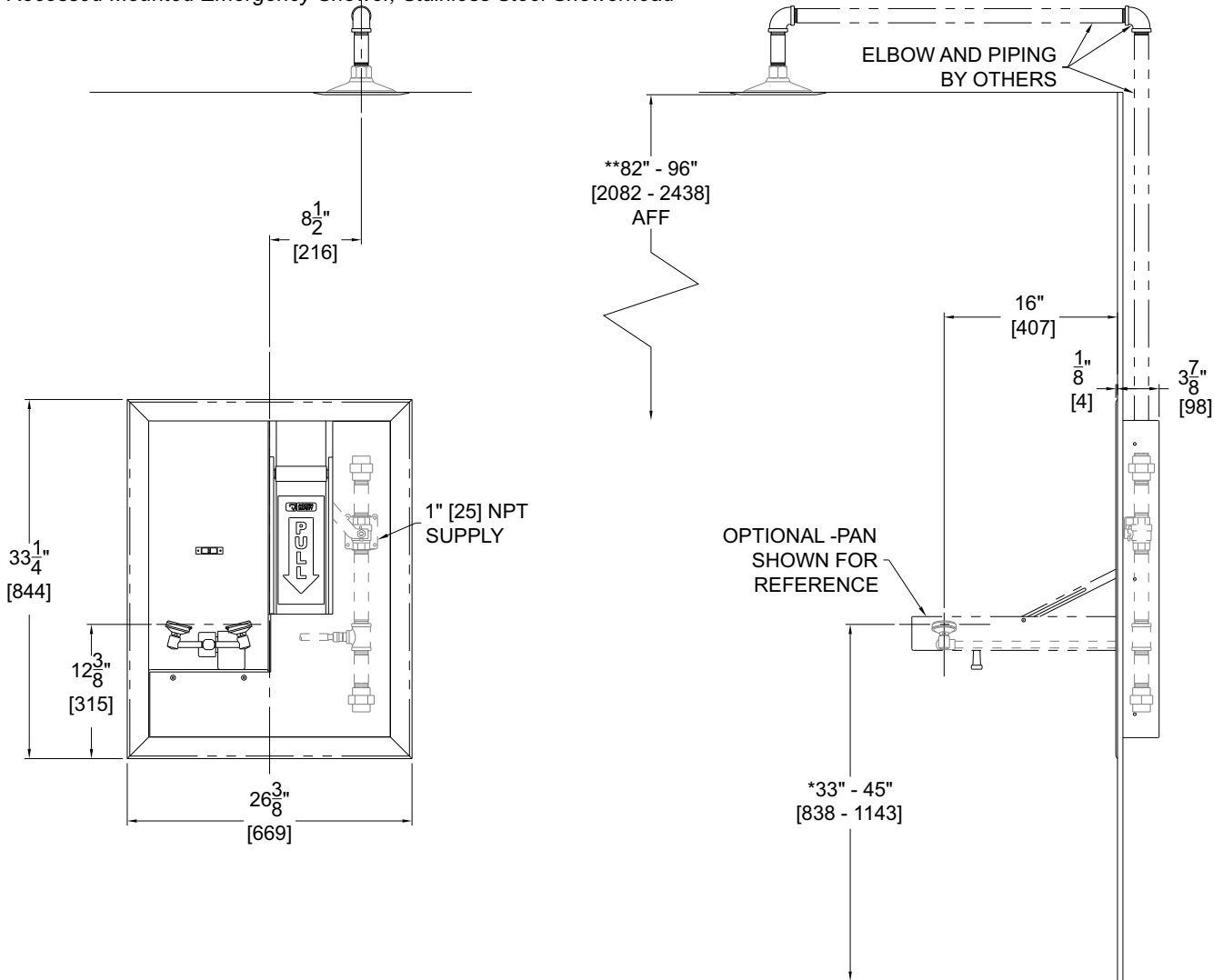
Phone 800-591-9372
626-855-4804

www.acorneng.com

TECHNICAL DIMENSIONS

All dimensions are subject to manufacturer's tolerance of plus or minus 1/2" nominal and subject to change without notice. Acorn Safety® assumes no responsibility for use of void or superseded data. Dimensions may change with the addition of optional accessories. © Acorn Safety®, A Division of Acorn Engineering Company®, Member of Morris Group International™. Please visit www.acorneng.com for most current specifications.

Model S3160-RA : Barrier Free Combination Station, Recessed Activation, Eye/Face Wash, Recessed Mounted Emergency Shower, Stainless Steel Showerhead



GENERAL NOTES:

1. ALL DIMENSIONS ARE INCHES [MM].
- *2. ANSI Z358.1 REQUIRES NOZZLES TO BE MOUNTED BETWEEN 33" - 45" [838 - 1143] ABOVE THE FINISHED FLOOR.
- **3. ANSI Z358.1 REQUIRES SHOWER HEAD TO BE MOUNTED BETWEEN 82" - 96" [2083 - 2438] ABOVE THE FINISHED FLOOR.
4. SHOWN WITH OPTIONAL -PAN

⚠ WARNING: Cancer and Reproductive Harm - www.P65Warnings.ca.gov

S3160-RA Date: 08/21/17

Acorn Safety warrants that its products are free from defects in material or workmanship under normal use and service for a period of one year from date of shipment. Acorn's liability under this warranty shall be discharged solely by replacement or repair of defective material, provided Acorn is notified in writing within one year from date of shipment, F.O.B. Industry, California.

SELECTION SUMMARY & APPROVAL FOR MANUFACTURING

Model Number & Options _____ Quantity _____

Company _____

Contact _____ Title _____

Signature (Approval for Manufacturing) _____ Date _____



800-591-9372
or 626-855-4804
www.acorneng.com